

# FIS1 antibody

Catalog Number: 110667

## Product name

FIS1 antibody

## Specificity

Human, Mouse, Rat; other species not tested.

## Antibody description

FIS1 Rabbit Polyclonal antibody. Positive WB detected in mouse brain tissue, A431 cells, COLO 320 cells, HEK-293 cells, HeLa cells, human heart tissue, human spleen tissue, mouse heart tissue, mouse thymus tissue, rat brain tissue, rat heart tissue. Positive IP detected in HeLa cells. Positive IF detected in Hepa1-6 cells. Positive IHC detected in human brain tissue, human prostate cancer tissue. Observed molecular weight by Western-blot: 17 kDa

## Preparation

This antibody was obtained by immunization of FIS1 recombinant protein (Accession Number: NM\_016068). Purification method: Antigen affinity purified.

## Formulation

PBS with 0.1% sodium azide and 50% glycerol pH 7.3.

## Storage

Store at -20°C. DO NOT ALIQUOT

## Clonality

Polyclonal

## Ig Type

Rabbit IgG

## Applications

ELISA, IHC, IF, IP, WB

## Dilutions

Recommended Dilution:

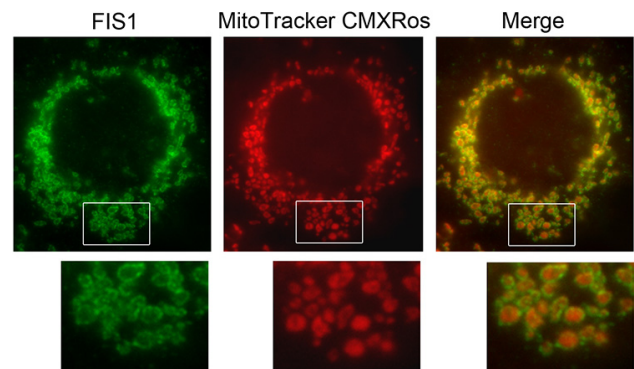
WB: 1:500-1:5000

IP: 1:200-1:2000

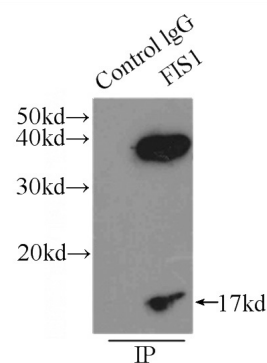
IHC: 1:10-1:100

IF: 1:10-1:100

## Validations



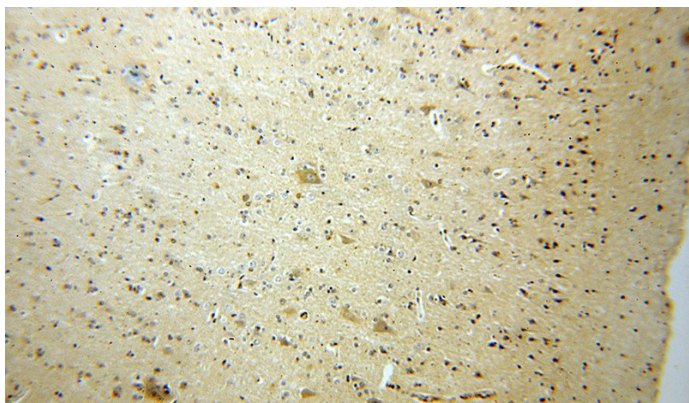
IF result of anti-FIS1 (Catalog No: 110667, 1:100) with Hepa1-6 cell by Dr. Steven Eugene Smith. Mitochondrion outer membrane (Green) Stain.



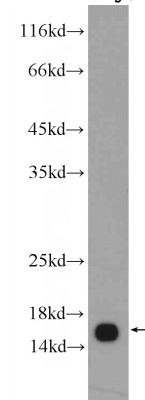
IP Result of anti-FIS1 (IP: Catalog No: 110667, 3ug; Detection: Catalog No: 110667 1:500) with HeLa cells lysate 3000ug.

# FIS1 antibody


Catalog Number: 110667



human brain using Catalog No:110667(FIS1 antibody) at dilution of 1:25 (under 40x lens)



mouse brain tissue were subjected to SDS PAGE followed by western blot with Catalog No:110667(FIS1 Antibody) at dilution of 1:1000

Immunohistochemical of paraffin-embedded human brain using Catalog No:110667(FIS1 antibody) at dilution of 1:25 (under 10x lens) 

Immunohistochemical of paraffin-embedded