

# Rat EphA4/Eph Receptor A4 (Fc Tag) recombinant protein



Catalog Number: 500667

## General Information

### Protein Construction

A DNA sequence encoding the rat EPHA4 (D3ZZK3) (Met1-Tyr547) was expressed, fused with the Fc region of human IgG1 at the C-terminus.

### Organism

Rat

### Expression Host

Human Cells

## QC Testing

### Activity

Measured by its binding ability in a functional ELISA. Immobilized mouse EFNA5-His (Cat:503820) at 10 µg/ml (100 µl/well) can bind Rat EPHA4-Fc, The EC<sub>50</sub> of Rat EPHA4-Fc is 19.8-46.3 ng/ml.

### Purity

> 98 % as determined by SDS-PAGE

### Endotoxin

< 1.0 EU per µg of the protein as determined by the LAL method

### Stability

Samples are stable for up to twelve months from date of receipt at -70°C

### Predicted N terminal

Val 20

### Molecular Mass

The recombinant rat EPHA4/Fc is a disulfide-linked homodimer. The reduced monomer comprises 769 amino acids and has a predicted molecular mass of 85.3 kDa. The apparent molecular mass of the protein is approximately 98 kDa in SDS-PAGE under reducing conditions.

### Formulation

- Lyophilized from sterile PBS, pH 7.4
1. 5 % trehalose and mannitol are added as protectants before lyophilization.
  2. Please contact us for any concerns or special requirements.

## Usage Guide

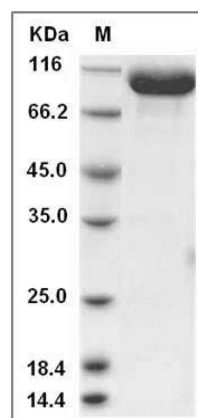
### Storage

Store it under sterile conditions at -20°C to -80°C. It is recommended that the protein be aliquoted for optimal storage. Avoid repeated freeze-thaw cycles.

### Reconstitution

Adding sterile water, prepare a stock solution of 0.25 mg/ml. Concentration is measured by UV-Vis.

### SDS-PAGE



Rat EphA4 Protein (Fc Tag) SDS-PAGE