

# NR2F1 antibody

Catalog Number: 113267

## Product name

NR2F1 antibody

## Specificity

Human, Mouse; other species not tested.

## Antibody description

NR2F1 Rabbit Polyclonal antibody. Positive IHC detected in human ovary tissue. Positive WB detected in human placenta tissue, NIH/3T3 cells. Observed molecular weight by Western-blot: 50-55 kDa

## Preparation

This antibody was obtained by immunization of NR2F1 recombinant protein (Accession Number: NM\_005654). Purification method: Antigen affinity purified.

## Formulation

PBS with 0.1% sodium azide and 50% glycerol pH 7.3.

## Storage

Store at -20°C. DO NOT ALIQUOT

## Clonality

Polyclonal

## Ig Type

Rabbit IgG

## Applications

ELISA, WB, IHC

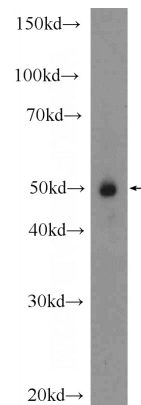
## Dilutions

Recommended Dilution:

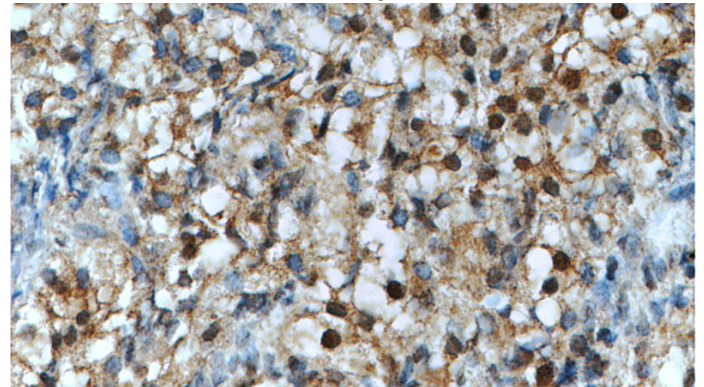
WB: 1:200-1:2000

IHC: 1:20-1:200

## Validations



human placenta tissue were subjected to SDS PAGE followed by western blot with Catalog No:113267(NR2F1 Antibody) at dilution of 1:600



Immunohistochemistry of paraffin-embedded human ovary tissue slide using Catalog No:113267(NR2F1 Antibody) at dilution of 1:50 (under 40x lens)