

RAB3A-specific antibody



Catalog Number: 106967

Product name

RAB3A-specific antibody

IHC: 1:20-1:200

IF: 1:10-1:100

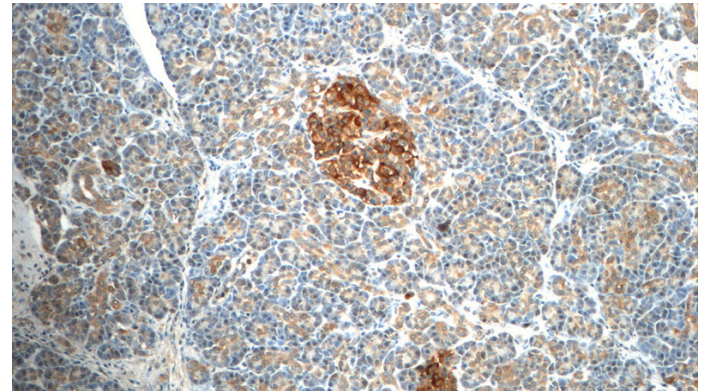
Specificity

Human, Mouse, Rat; other species not tested.

Validations

Antibody description

RAB3A-specific Rabbit Polyclonal antibody. Positive WB detected in mouse brain tissue, rat brain tissue. Positive IF detected in HeLa cells. Positive IHC detected in human pancreas tissue. Observed molecular weight by Western-blot: 25 kDa



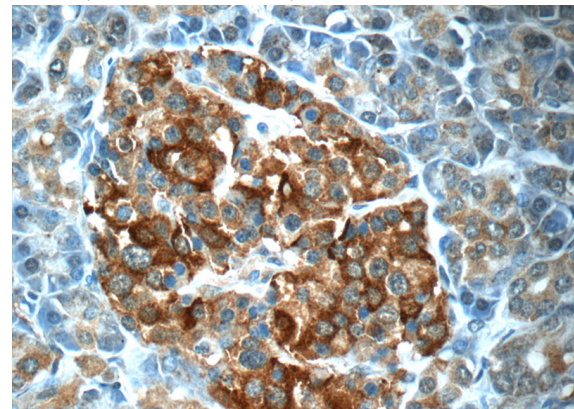
Preparation

This antibody was obtained by immunization of Peptide (Accession Number: NM_002866). Purification method: Antigen affinity purified.

Immunohistochemistry of paraffin-embedded human pancreas tissue slide using Catalog No:114440(RAB3A-specific Antibody) at dilution of 1:50 (under 10x lens)

Formulation

PBS with 0.1% sodium azide and 50% glycerol pH 7.3.



Storage

Store at -20°C. DO NOT ALIQUOT

Immunohistochemistry of paraffin-embedded human pancreas tissue slide using Catalog No:114440(RAB3A-specific Antibody) at dilution of 1:50 (under 40x lens)

Clonality

Polyclonal

Ig Type

Rabbit IgG

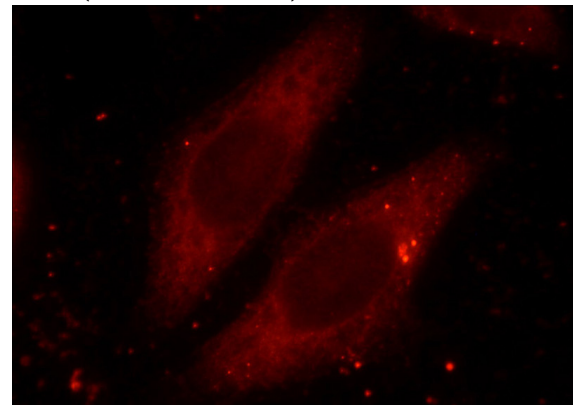
Applications

ELISA, WB, IF, IHC

Dilutions

Recommended Dilution:

WB: 1:500-1:5000



RAB3A-specific antibody



Catalog Number: 106967

Immunofluorescent analysis of HeLa cells using Catalog No:114440(RAB3A-specific Antibody) at dilution of 1:25 and Rhodamine-Goat anti-Rabbit

mouse brain tissue were subjected to SDS PAGE followed by western blot with Catalog No:114440(RAB3A-specific antibody) at dilution of 1:1000

