

Anti-SLCO5A1 Rabbit antibody



Catalog Number: 166967

Product name

Anti-SLCO5A1 Rabbit antibody

Specificity

Human, Mouse

Antibody description

SLCO5A1 Rabbit polyclonal antibody

Preparation

Antigen: Recombinant protein of human SLCO5A1

Formulation

Supplied in 50nM Tris-Glycine(pH 7.4), 0.15M NaCl, 40%Glycerol, 0.01% sodium azide and 0.05% BSA.

Storage

Store at -20°C. Stable for 12 months from date of receipt.

Clonality

Polyclonal

Ig Type

Rabbit IgG

Applications

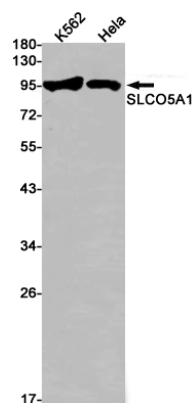
WB, IHC-P

Dilutions

WB: 1/1000

IHC: 1/20

Validations



Western blot detection of SLCO5A1 in K562, HeLa cell lysates using SLCO5A1 Rabbit pAb(1:1000 diluted). Predicted band size: 92kDa. Observed band size: 92kDa.