

Anti-ENO1 / Enolase 1 / alpha-enolase antibody



Catalog Number: 105967

Product name

Rabbit IgG

Anti-ENO1 / Enolase 1 / alpha-enolase antibody

Applications

Immunogen

ELISA, WB, IP

[Rat ENO1 / Enolase 1 / alpha-enolase \(His Tag\) recombinant protein](#)

Dilutions

Specificity

WB: 2-10 µg/ml

Rat ENO1 / Enolase 1 / alpha-enolase

ELISA: 0.1-0.2 µg/mL

Antibody description

Rabbit polyclonal to ENO1 / Enolase 1 / alpha-enolase

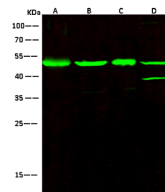
This antibody can be used at 0.1-0.2 µg/mL with the appropriate secondary reagents to detect Rat ENO1 / Enolase 1 / alpha-enolase. The detection limit for Rat ENO1 / Enolase 1 / alpha-enolase is < 0.039 ng/well.

Preparation

IP: 1-4 µg/mg of lysate

Produced in rabbits immunized with purified, recombinant Rat ENO1 / Enolase 1 / alpha-enolase (rh ENO1 / Enolase 1 / alpha-enolase; NP_036686.2; Met1-Lys434). ENO1 / Enolase 1 / alpha-enolase specific IgG was purified by Rat ENO1 / Enolase 1 / alpha-enolase affinity chromatography.

Validations



Items	Lanes	A	B	C	D
Sample (whole cell lysate)		HepG2	Jurkat	MCF7	A431
Sample Volume (µg/lane)		30	30	30	30
Gel	13% SDS-PAGE reducing gel				
Recommended Concentration	2-10 µg/ml				
Secondary Antibody	Dylight 800-labeled Antibody to Rabbit IgG (H+L), at 1:5000 dilution. Developed using Odyssey imaging system.				
Explanation	Predicted band size - 47 kDa Observed band size - 47 kDa Additional bands at : 38 kDa (We are unsure as to the identity of these extra bands. They are possible non-specific bindings).				

Formulation

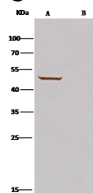
0.2 µm filtered solution in PBS

Storage

This antibody can be stored at 2°C-8°C for one month without detectable loss of activity. Antibody products are stable for twelve months from date of receipt when stored at -20°C to -80°C. Preservative-Free.

Sodium azide is recommended to avoid contamination (final concentration 0.05%-0.1%). It is toxic to cells and should be disposed of properly. Avoid repeated freeze-thaw cycles.

ENO1 / Enolase 1 / alpha-enolase Antibody, Rabbit PAb, Antigen Affinity Purified, Western blot



Items	Lanes	A	B
Sample (whole cell lysate)	HepG2		
Sample quantity	0.5 mg		
IP antibody type	His-RatENO1-2F02	Rabbit blank IgG	
IP antibody quantity	2 µg		
Protein G agarose	15 µl of 50% Protein G Agarose		
Gel	13% SDS-PAGE reducing gel		
Primary antibody	His-RatENO1 antibody at 10 µg/ml		
Secondary antibody	Clouster II [®] IP Detection Reagent (HRP) at 1:1000 dilution		

Clonality

Polyclonal

Ig Type

ENO1 / Enolase 1 / alpha-enolase Antibody, Rabbit PAb, Antigen Affinity Purified,

Anti-ENO1 / Enolase 1 / alpha-enolase antibody



Catalog Number: 105967

Immunoprecipitation