

# CRLS1-Specific antibody

Catalog Number: 109567

## Product name

CRLS1-Specific antibody

## Specificity

Human, Mouse, Rat; other species not tested.

## Antibody description

CRLS1-Specific Rabbit Polyclonal antibody. Positive IHC detected in human liver cancer tissue. Observed molecular weight by Western-blot: 32 kDa

## Preparation

This antibody was obtained by immunization of Peptide (Accession Number: NM\_019095). Purification method: Antigen affinity purified.

## Formulation

PBS with 0.02% sodium azide and 50% glycerol pH 7.3.

## Storage

Store at -20°C. DO NOT ALIQUOT

## Clonality

Polyclonal

## Ig Type

Rabbit IgG

## Applications

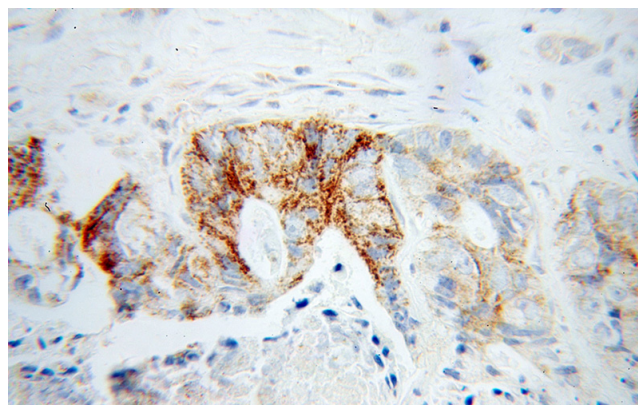
ELISA, IHC

## Dilutions

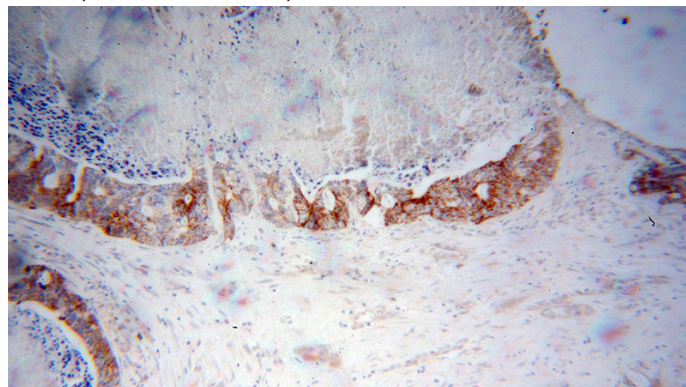
Recommended Dilution:

IHC: 1:20-1:200

## Validations



Immunohistochemical of paraffin-embedded human liver cancer using Catalog No:109567(CRLS1-Specific antibody) at dilution of 1:50 (under 40x lens)



Immunohistochemical of paraffin-embedded human liver cancer using Catalog No:109567(CRLS1-Specific antibody) at dilution of 1:50 (under 10x lens)