

BOULE antibody

Catalog Number: 108567

Product name

BOULE antibody

IP: 1:500-1:5000

IHC: 1:20-1:200

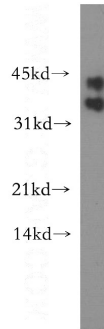
Specificity

Human, Mouse, Rat; other species not tested.

Antibody description

BOULE Rabbit Polyclonal antibody. Positive IHC detected in human testis tissue. Positive WB detected in mouse testis tissue. Positive IP detected in mouse testis tissue. Observed molecular weight by Western-blot: 38-42 kDa

Validations



Preparation

This antibody was obtained by immunization of BOULE recombinant protein (Accession Number: NM_033030). Purification method: Antigen affinity purified.

mouse testis tissue were subjected to SDS PAGE followed by western blot with Catalog No:117214(BOLL antibody) at dilution of 1:400

Formulation

PBS with 0.02% sodium azide and 50% glycerol pH 7.3.

Storage

Store at -20°C. DO NOT ALIQUOT

Clonality

Polyclonal

Ig Type

Rabbit IgG

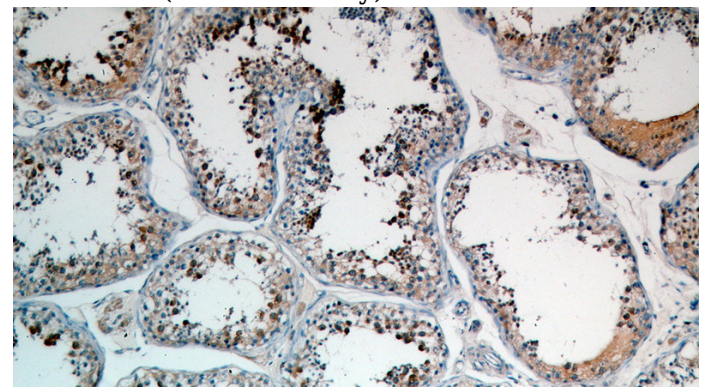
Applications

ELISA, WB, IHC, IP

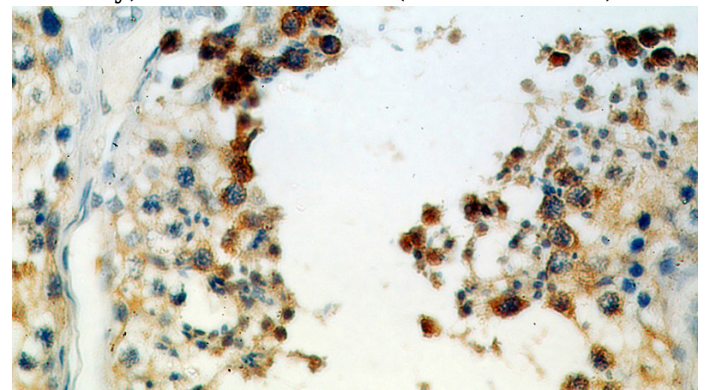
Dilutions

Recommended Dilution:

WB: 1:200-1:2000



Immunohistochemical of paraffin-embedded human testis using Catalog No:117214(BOLL antibody) at dilution of 1:50 (under 10x lens)

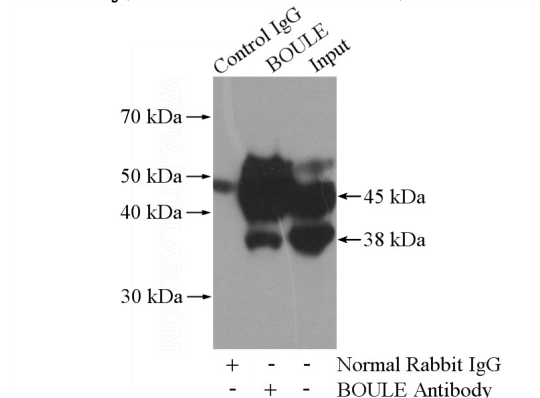


Immunohistochemical of paraffin-embedded human testis using Catalog No:117214(BOLL antibody) at dilution of 1:50 (under 10x lens)

BOULE antibody

Catalog Number: 108567

antibody) at dilution of 1:50 (under 40x lens)



IP Result of anti-BOLL (IP:Catalog No:117214, 4ug; Detection:Catalog No:117214 1:1000) with mouse testis tissue lysate 4000ug.