

KLKB1 Polyclonal Antibody



Catalog Number: 166567

Product name

KLKB1 Polyclonal Antibody

Specificity

Human, Mouse, Rat

Antibody description

Polyclonal antibody to KLKB1

Preparation

Antigen: Recombinant fusion protein containing a sequence corresponding to amino acids 20-300 of human KLKB1 (NP_000883.2).

Formulation

PBS with 0.02% sodium azide, 50% glycerol, pH7.3.

Storage

Store at -20°C. Avoid freeze / thaw cycles.

Clonality

Polyclonal

Ig Type

Rabbit IgG

Applications

WB, IHC, IF

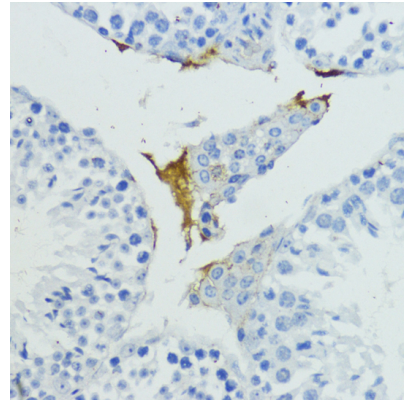
Dilutions

WB 1:500 - 1:2000

IHC 1:50 - 1:200

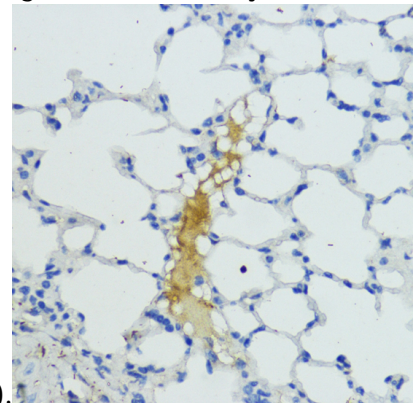
IF 1:50 - 1:200

Validations



Immunohistochemistry - KLKB1 Polyclonal Antibody

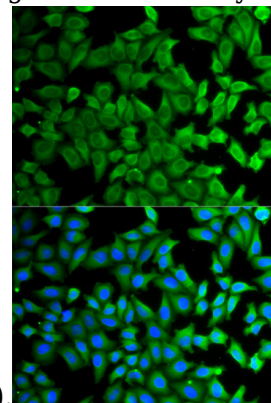
Immunohistochemistry of paraffin-embedded mouse testis using KLKB1 antibody at dilution of



1:200 (40x lens).

Immunohistochemistry - KLKB1 Polyclonal Antibody

Immunohistochemistry of paraffin-embedded mouse lung using KLKB1 antibody at dilution of



1:200 (40x lens).

Immunofluorescence - KLKB1 Polyclonal Antibody

Immunofluorescence analysis of HeLa cells using

KLKB1 Polyclonal Antibody



Catalog Number: 166567

KLKB1 antibody . Blue: DAPI for nuclear staining.