

SPHK2 antibody

Catalog Number: 115567

Product name

SPHK2 antibody

Specificity

Human, Mouse, Rat; other species not tested.

Antibody description

SPHK2 Rabbit Polyclonal antibody. Positive WB detected in mouse cerebellum tissue, human kidney tissue, L02 cells, mouse brain tissue, mouse heart tissue, mouse kidney tissue, mouse liver tissue. Positive IP detected in mouse liver tissue. Positive IHC detected in human kidney tissue, human liver tissue. Observed molecular weight by Western-blot: 65 kDa, 70 kDa

Preparation

This antibody was obtained by immunization of SPHK2 recombinant protein (Accession Number: XM_006723292). Purification method: Antigen affinity purified.

Formulation

PBS with 0.02% sodium azide and 50% glycerol pH 7.3.

Storage

Store at -20°C. DO NOT ALIQUOT

Clonality

Polyclonal

Ig Type

Rabbit IgG

Applications

ELISA, WB, IHC, IP

Dilutions

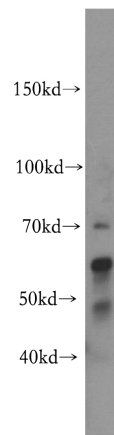
Recommended Dilution:


WB: 1:200-1:2000

IP: 1:200-1:2000

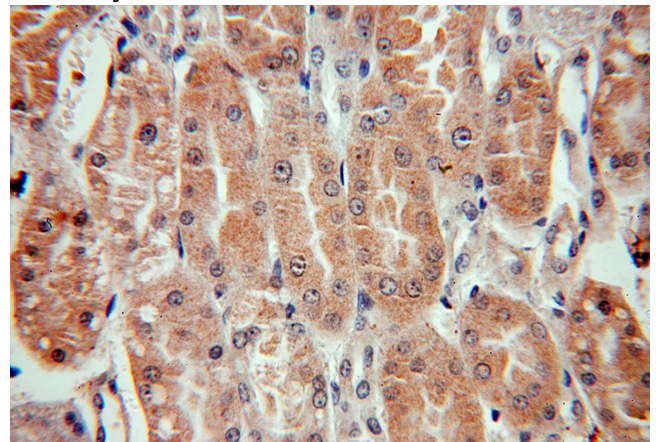
IHC: 1:20-1:200

Validations



mouse cerebellum tissue were subjected to SDS PAGE followed by western blot with Catalog No:115567(SPHK2 antibody) at dilution of 1:300 

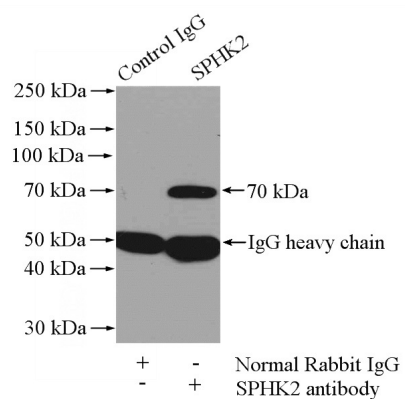
Immunohistochemical of paraffin-embedded human kidney using Catalog No:115567(SPHK2 antibody) at dilution of 1:50 (under 10x lens)



Immunohistochemical of paraffin-embedded human kidney using Catalog No:115567(SPHK2 antibody) at dilution of 1:50 (under 40x lens)

SPHK2 antibody

Catalog Number: 115567



IP Result of anti-SPHK2 (IP:Catalog No:115567, 4ug; Detection:Catalog No:115567 1:800) with mouse liver tissue lysate 4000ug.