

RBPMS antibody

Catalog Number: 114567

Product name

RBPMS antibody

Recommended Dilution:

WB: 1:500-1:5000

Specificity

Human, Mouse, Rat; other species not tested.

IP: 1:200-1:1000

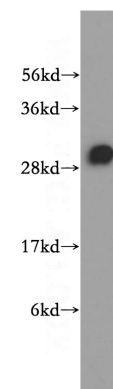
IHC: 1:20-1:200

Antibody description

RBPMS Rabbit Polyclonal antibody. Positive IP detected in mouse heart tissue. Positive WB detected in mouse heart tissue, mouse kidney tissue, mouse liver tissue. Positive IF detected in HeLa cells. Positive IHC detected in human ovary tumor tissue. Positive FC detected in HeLa cells. Observed molecular weight by Western-blot: 28-30 kDa

IF: 1:10-1:100

Validations



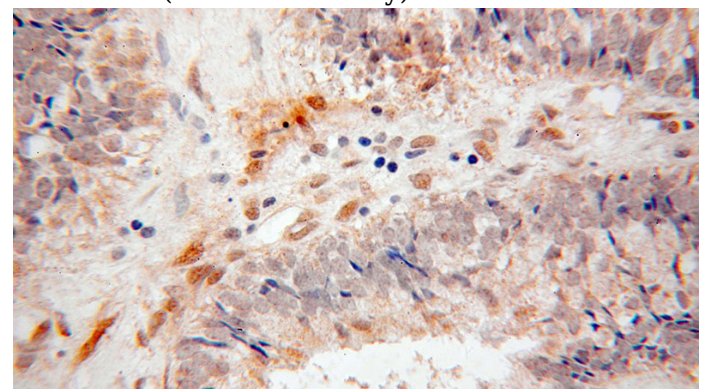
Preparation

This antibody was obtained by immunization of RBPMS recombinant protein (Accession Number: NM_001008712). Purification method: Antigen affinity purified.

mouse heart tissue were subjected to SDS PAGE followed by western blot with Catalog No:114567(RBPMS antibody) at dilution of 1:400

Formulation

PBS with 0.02% sodium azide and 50% glycerol pH 7.3.



Storage

Store at -20°C. DO NOT ALIQUOT

Clonality

Polyclonal

Ig Type

Rabbit IgG

Immunohistochemical of paraffin-embedded human ovary tumor using Catalog No:114567(RBPMS antibody) at dilution of 1:50 (under 40x lens)

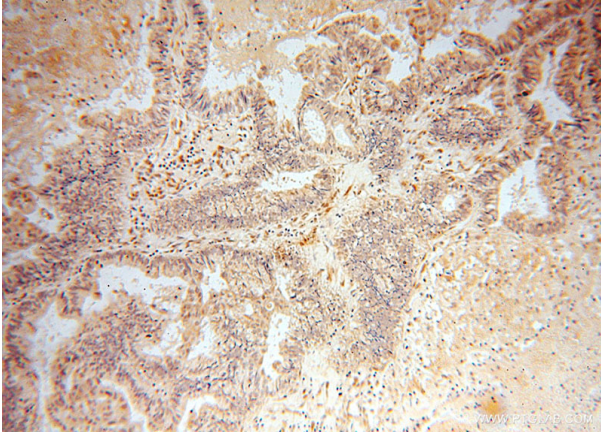
Applications

ELISA, WB, IHC, IF, FC, IP

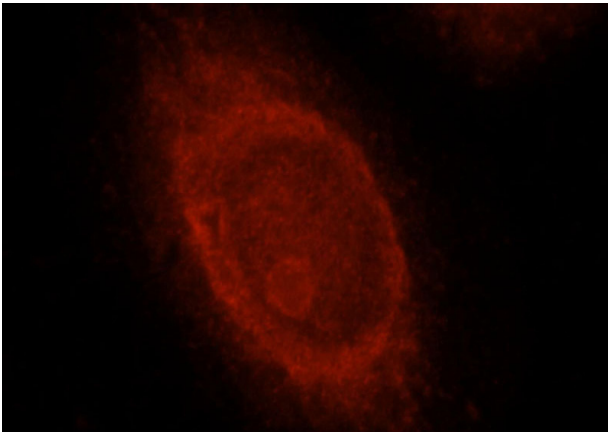
Dilutions

RBPM5 antibody

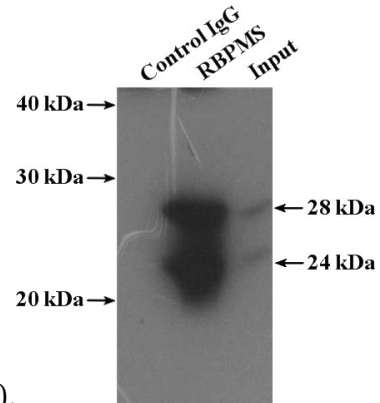
Catalog Number: 114567



Immunohistochemical of paraffin-embedded human ovary tumor using Catalog No:114567(RBPM5 antibody) at dilution of 1:50 (under 10x lens)

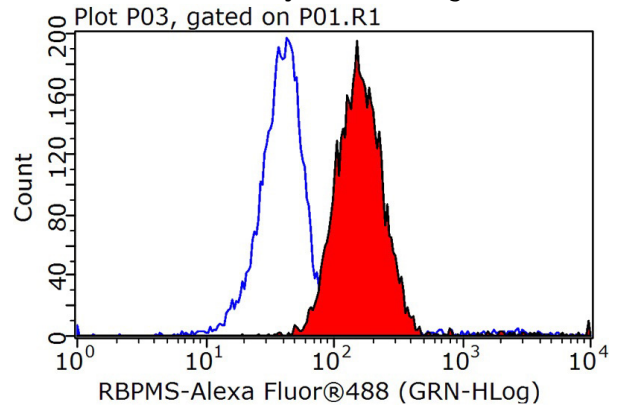


Immunofluorescent analysis of HeLa cells, using RBPM5 antibody Catalog No:114567 at 1:25 dilution and Rhodamine-labeled goat anti-rabbit



IgG (red).

IP Result of anti-RBPM5 (IP:Catalog No:114567, 4ug; Detection:Catalog No:114567 1:400) with mouse heart tissue lysate 4000ug.



1X10⁶ HeLa cells were stained with 0.2ug RBPM5 antibody (Catalog No:114567, red) and control antibody (blue). Fixed with 90% MeOH blocked with 3% BSA (30 min). Alexa Fluor 488-conjugated AffiniPure Goat Anti-Rabbit IgG(H+L) with dilution 1:1000.