

# TUFM Polyclonal Antibody



Catalog Number: 164867

## Product name

TUFM Polyclonal Antibody

## Specificity

Human, Mouse, Rat

## Antibody description

Polyclonal antibody to TUFM

## Preparation

Antigen: Recombinant fusion protein containing a sequence corresponding to amino acids 186-455 of human TUFM (NP\_003312.3).

## Formulation

PBS with 0.02% sodium azide, 50% glycerol, pH7.3.

## Storage

Store at -20°C. Avoid freeze / thaw cycles.

## Clonality

Polyclonal

## Ig Type

Rabbit IgG

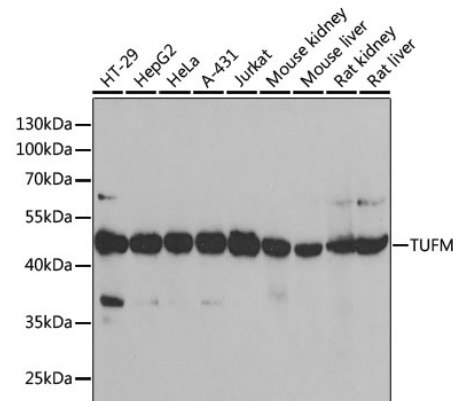
## Applications

WB, IHC, IF, IP

## Dilutions

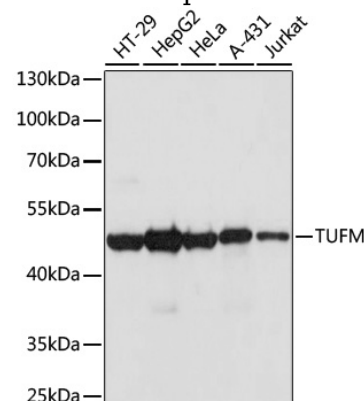
WB 1:500 - 1:2000  
IHC 1:50 - 1:200  
IF 1:10 - 1:100  
IP 1:50 - 1:200

## Validations



Western blot - TUFM Polyclonal Antibody

Western blot analysis of extracts of various cell lines, using TUFM antibody at 1:1000 dilution. Secondary antibody: HRP Goat Anti-Rabbit IgG (H+L) at 1:10000 dilution. Lysates/proteins: 25ug per lane. Blocking buffer: 3% nonfat dry milk in TBST. Detection: ECL Basic Kit. Exposure time: 90s.



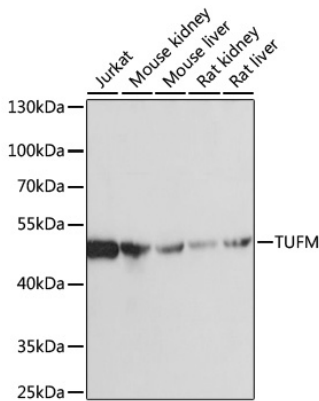
Western blot - TUFM Polyclonal Antibody

Western blot analysis of extracts of various cells, using TUFM antibody at 1:1000 dilution ratio through one-step method. Secondary antibody: HRP Goat Anti-Rabbit IgG (H+L) at 1:10000 dilution. Lysates/proteins: 25ug per lane. Blocking buffer: 3% nonfat dry milk in TBST. Detection: ECL Basic Kit. Exposure time: 1s.

# TUFM Polyclonal Antibody

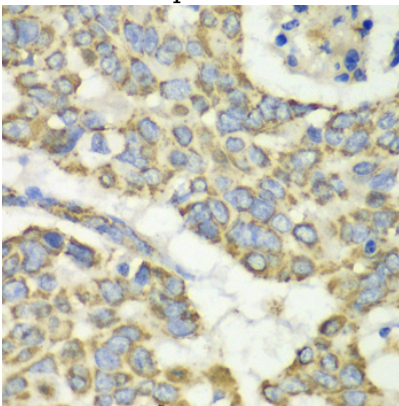


Catalog Number: 164867



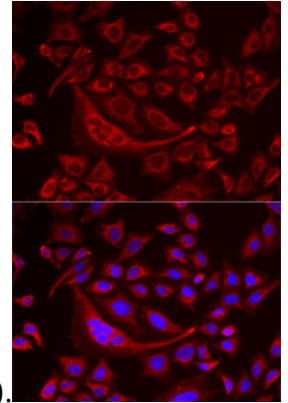
## Western blot - TUFM Polyclonal Antibody

Western blot analysis of extracts of various cells, using TUFM antibody at 1:1000 dilution ratio through one-step method. Secondary antibody: HRP Goat Anti-Rabbit IgG (H+L) at 1:10000 dilution. Lysates/proteins: 25ug per lane. Blocking buffer: 3% nonfat dry milk in TBST. Detection: ECL Basic Kit. Exposure time: 30s.



## Immunohistochemistry - TUFM Polyclonal Antibody

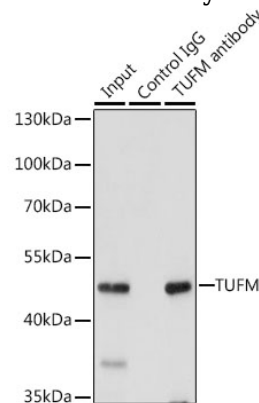
## Immunohistochemistry of paraffin-embedded human esophageal cancer using TUFM antibody



at dilution of 1:100 (40x lens).

## Immunofluorescence - TUFM Polyclonal Antibody

Immunofluorescence analysis of MCF7 cells using TUFM antibody. Blue: DAPI for nuclear staining.



## Immunoprecipitation - TUFM Polyclonal Antibody

Immunoprecipitation analysis of 200ug extracts of 293T cells, using 3 ug TUFM antibody. Western blot was performed from the immunoprecipitate using TUFM antibody at a dilution of 1:1000.