

# PHYHIPL antibody



Catalog Number: 113867

## Product name

PHYHIPL antibody

## Specificity

human, mouse, rat; other species not tested.

## Antibody description

PHYHIPL Rabbit Polyclonal antibody. Positive WB detected in mouse kidney tissue, mouse testis tissue. Observed molecular weight by Western-blot: 43-45kd

## Preparation

This antibody was obtained by immunization of PHYHIPL recombinant protein (Accession Number: NM\_032439). Purification method: Antigen affinity purified.

## Formulation

PBS with 0.02% sodium azide and 50% glycerol pH 7.3.

## Storage

Store at -20°C. DO NOT ALIQUOT

## Clonality

Polyclonal

## Ig Type

Rabbit IgG

## Applications

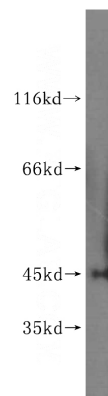
ELISA, WB

## Dilutions

Recommended Dilution:

WB: 1:200-1:2000

## Validations



mouse kidney tissue were subjected to SDS PAGE followed by western blot with Catalog No:113867(PHYHIPL antibody) at dilution of 1:400