

# SNUPN antibody



Catalog Number: 115467

## Product name

SNUPN antibody

IHC: 1:20-1:200

IF: 1:10-1:100

## Specificity

Human, Mouse, Rat; other species not tested.

## Antibody description

SNUPN Rabbit Polyclonal antibody. Positive WB detected in HeLa cells. Positive IHC detected in human brain tissue. Positive IF detected in MCF-7 cells, HeLa cells. Observed molecular weight by Western-blot: 41kd

## Preparation

This antibody was obtained by immunization of SNUPN recombinant protein (Accession Number: NM\_001042581). Purification method: Antigen affinity purified.

## Formulation

PBS with 0.02% sodium azide and 50% glycerol pH 7.3.

## Storage

Store at -20°C. DO NOT ALIQUOT

## Clonality

Polyclonal

## Ig Type

Rabbit IgG

## Applications

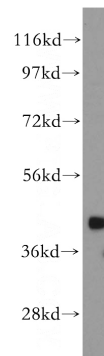
ELISA, WB, IHC, IF

## Dilutions

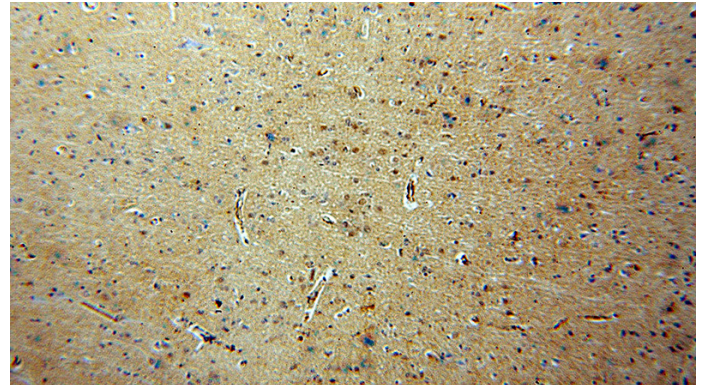
Recommended Dilution:

WB: 1:1000-1:10000

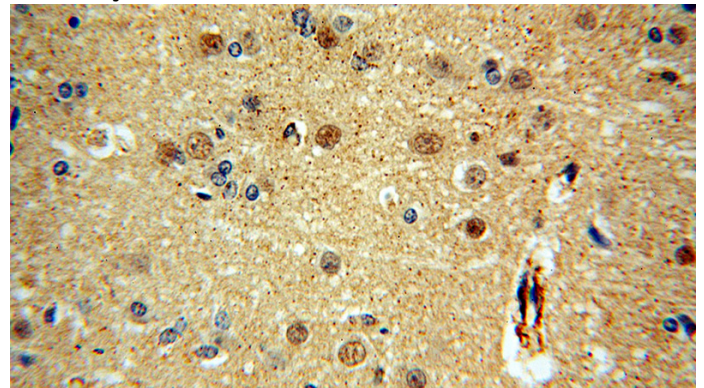
## Validations



HeLa cells were subjected to SDS PAGE followed by western blot with Catalog No:115467(SNUPN antibody) at dilution of 1:2000



Immunohistochemical of paraffin-embedded human brain using Catalog No:115467(SNUPN antibody) at dilution of 1:100 (under 10x lens)



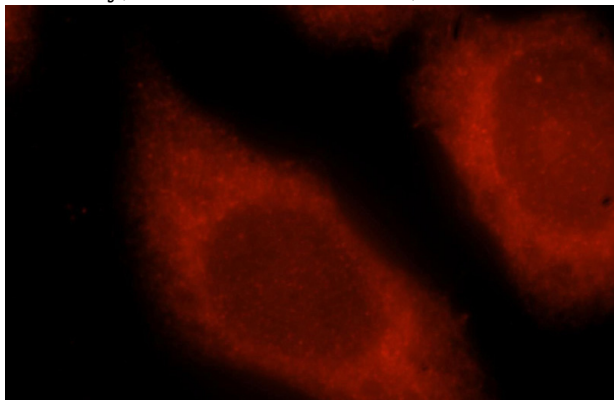
Immunohistochemical of paraffin-embedded human brain using Catalog No:115467(SNUPN

# SNUPN antibody

Catalog Number: 115467

---

antibody) at dilution of 1:100 (under 40x lens)



Immunofluorescent analysis of MCF-7 cells, using SNUPN antibody Catalog No:115467 at 1:25 dilution and Rhodamine-labeled goat anti-rabbit IgG (red).