

# Anti-ADGRF1 antibody

Catalog Number: 175467

## Product name

Anti-ADGRF1 antibody

## Specificity

Human, Mouse

## Antibody description

Rabbit polyclonal antibody to ADGRF1

## Preparation

This antigen of this antibody was klh conjugated synthetic peptide derived from human g protein coupled receptor 110 51-150/910

## Formulation

Liquid, 0.01M TBS(pH7.4) with 1% BSA, 0.03% Proclin300 and 50% Glycerol.

## Storage

Store at -20°C for one year. Avoid repeated freeze/thaw cycles. The lyophilized antibody is stable at room temperature for at least one month and for greater than a year when kept at -20°C. When reconstituted in sterile pH 7.4 0.01M PBS or diluent of antibody the antibody is stable for at least two weeks at 2-4°C.

## Clonality

Polyclonal

## Ig Type

Rabbit IgG

## Applications

WB, FC

## Dilutions

WB:1:500-2000

FC:1µg/Test

## Validations

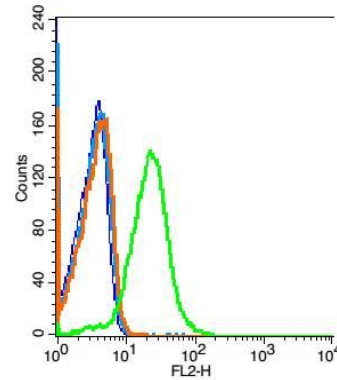
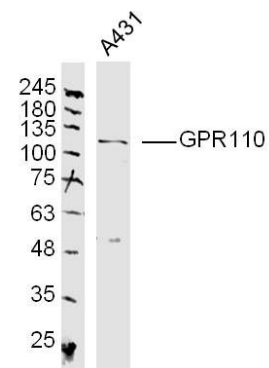
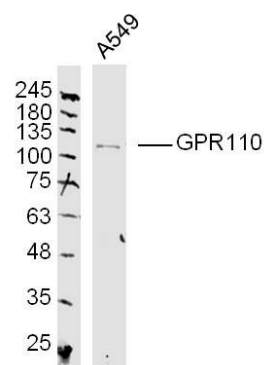


Fig1: Blank control(blue): Mouse Kidney Cells(fixed with 2% paraformaldehyde (10 min)).; Primary Antibody:Rabbit Anti- GPR110 antibody , Dilution: 1ug in 100 uL 1X PBS containing 0.5% BSA;; Isotype Control Antibody: Rabbit IgG(orange) ,used under the same conditions );; Secondary Antibody: Goat anti-rabbit IgG-PE(white blue), Dilution: 1:200 in 1 X PBS



containing 0.5% BSA.

Fig2: Sample: A431 (human)Cell Lysate at 40 ug; Primary: Anti-GPR110 at 1/300 dilution; Secondary: IRDye800CW Goat Anti-Rabbit IgG at 1/20000 dilution; Predicted band size: 99 kD;



Observed band size: 109 kD

# Anti-ADGRF1 antibody



Catalog Number: 175467

---

Fig3: Sample: A549 (human)Cell Lysate at 40 ug; 1/20000 dilution; Predicted band size: 99 kD;  
Primary: Anti-GPR110 at 1/300 dilution; Observed band size: 109 kD  
Secondary: IRDye800CW Goat Anti-Rabbit IgG at