

# GLUT4 Polyclonal Antibody

Catalog Number: 165467

## Product name

GLUT4 Polyclonal Antibody

## Specificity

Human, Mouse, Rat

## Antibody description

Polyclonal antibody to GLUT4

## Preparation

Antigen: A synthetic peptide corresponding to a sequence within amino acids 400 to the C-terminus of human GLUT4 (NP\_001033.1).

## Formulation

PBS with 0.02% sodium azide, 50% glycerol, pH7.3.

## Storage

Store at -20°C. Avoid freeze / thaw cycles.

## Clonality

Polyclonal

## Ig Type

Rabbit IgG

## Applications

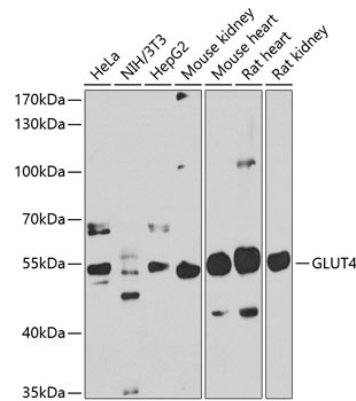
WB, IHC

## Dilutions

WB 1:500 - 1:2000

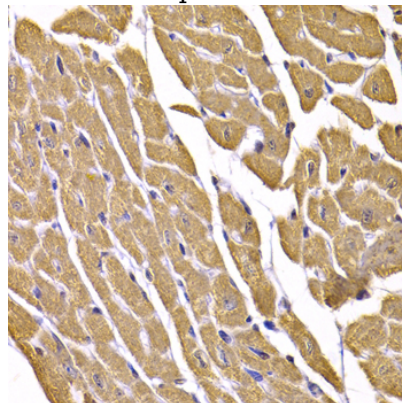
IHC 1:50 - 1:200

## Validations



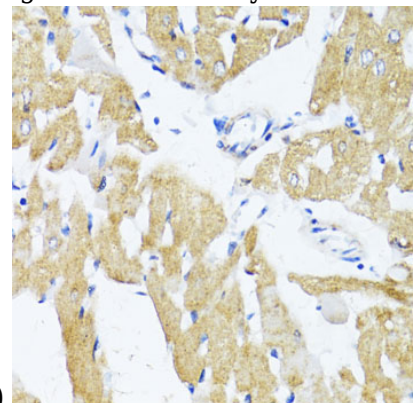
Western blot - GLUT4 Polyclonal Antibody

Western blot analysis of extracts of various cell lines, using GLUT4 antibody at 1:1000 dilution. Secondary antibody: HRP Goat Anti-Rabbit IgG (H+L) at 1:10000 dilution. Lysates/proteins: 25ug per lane. Blocking buffer: 3% nonfat dry milk in TBST. Detection: ECL Basic Kit. Exposure time: 90s.



Immunohistochemistry - GLUT4 Polyclonal Antibody

Immunohistochemistry of paraffin-embedded mouse heart using GLUT4 antibody at dilution of



1:100 (40x lens).

# GLUT4 Polyclonal Antibody

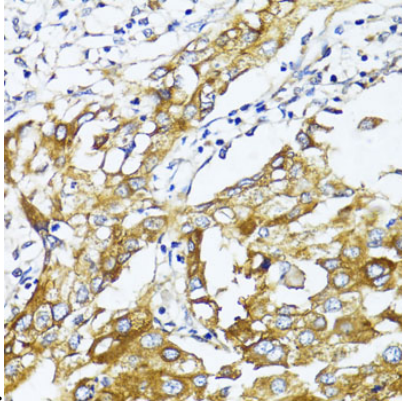


Catalog Number: 165467

---

## Immunohistochemistry - GLUT4 Polyclonal Antibody

Immunohistochemistry of paraffin-embedded rat heart using GLUT4 antibody at dilution of 1:100



(40x lens).

## Immunohistochemistry - GLUT4 Polyclonal Antibody

Immunohistochemistry of paraffin-embedded human liver cancer using GLUT4 antibody at dilution of 1:100 (40x lens).