

Raptor antibody

Catalog Number: 114467

Product name

Raptor antibody

IP: 1:500-1:5000

IHC: 1:20-1:200

Specificity

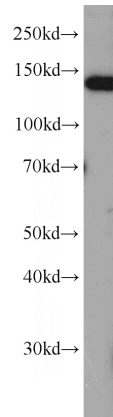
Human, Rat; other species not tested.

IF: 1:20-1:200

Antibody description

Raptor Rabbit Polyclonal antibody. Positive WB detected in HepG2 cells, HeLa cells, MCF7 cells. Positive IP detected in HeLa cells. Positive IHC detected in human kidney tissue, human skeletal muscle tissue. Positive IF detected in HeLa cells. Observed molecular weight by Western-blot: 130-150 kDa

Validations



HepG2 cells were subjected to SDS PAGE followed by western blot with Catalog No:114467(RPTOR antibody) at dilution of 1:1000

Preparation

This antibody was obtained by immunization of Peptide (Accession Number: NM_020761). Purification method: Antigen affinity purified.

Formulation

PBS with 0.02% sodium azide and 50% glycerol pH 7.3.

Storage

Store at -20°C. DO NOT ALIQUOT

Clonality

Polyclonal

Ig Type

Rabbit IgG

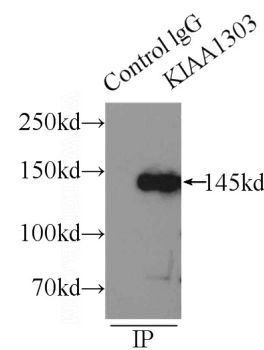
Applications

ELISA, WB, IHC, IP, IF

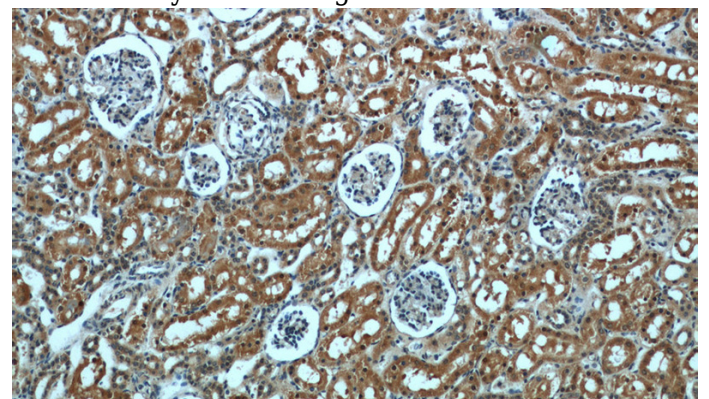
Dilutions

Recommended Dilution:

WB: 1:500-1:5000



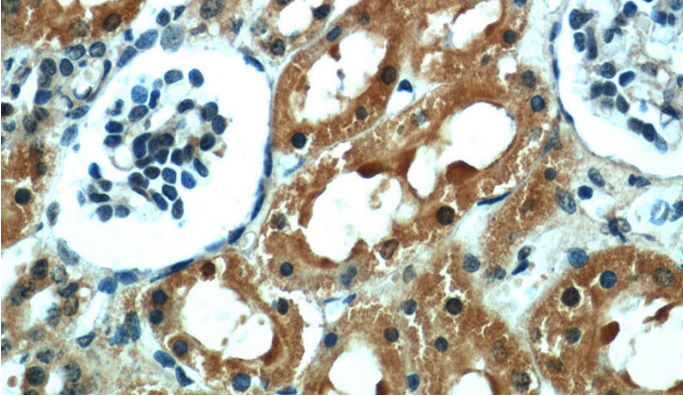
IP Result of anti-Raptor (IP:Catalog No:114467, 4ug; Detection:Catalog No:114467 1:1000) with HeLa cells lysate 1505ug.



Raptor antibody

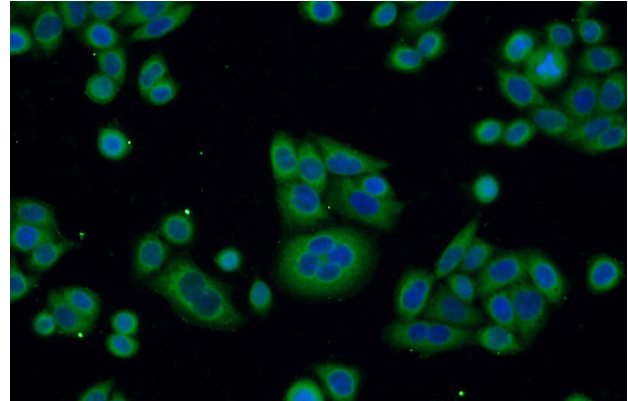
Catalog Number: 114467

Immunohistochemical of paraffin-embedded human kidney using Catalog No:114467(RPTOR antibody) at dilution of 1:50 (under 10x lens)



Immunohistochemical of paraffin-embedded human kidney using Catalog No:114467(RPTOR

antibody) at dilution of 1:50 (under 40x lens)



Immunofluorescent analysis of HeLa cells using Catalog No:114467(Raptor Antibody) at dilution of 1:50 and Alexa Fluor 488-conjugated AffiniPure Goat Anti-Rabbit IgG(H+L)