

Anti-Cystatin C / CST3 antibody



Catalog Number: 103467

Product name

Anti-Cystatin C / CST3 antibody

Immunogen

[Rat Cystatin C / CST3 \(His Tag\) recombinant protein](#)

Specificity

Rat Cystatin C / CST3

Antibody description

Rabbit polyclonal to Cystatin C / CST3

Preparation

Produced in rabbits immunized with purified, recombinant Rat Cystatin C / CST3 (rR Cystatin C / CST3; P14841-1; Met 1-Ala 140). Cystatin C / CST3 specific IgG was purified by Rat Cystatin C / CST3 affinity chromatography.

Formulation

0.2 µm filtered solution in PBS with 5% trehalose

Storage

This antibody can be stored at 2°C-8°C for one month without detectable loss of activity. Antibody products are stable for twelve months from date of receipt when stored at -20°C to -80°C.

Preservative-Free.

Sodium azide is recommended to avoid contamination (final concentration 0.05%-0.1%). It is toxic to cells and should be disposed of properly. Avoid repeated freeze-thaw cycles.

Clonality

Polyclonal

Ig Type

Rabbit IgG

Applications

ELISA, IHC-P

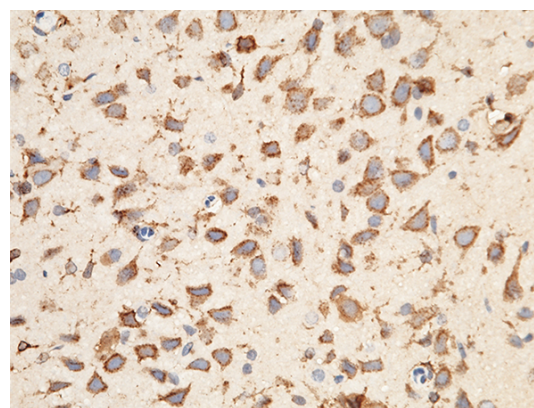
Dilutions

ELISA: 0.1-0.2 µg/mL

This antibody can be used at 0.1-0.2 µg/mL with the appropriate secondary reagents to detect Rat CST3. The detection limit for Rat CST3 is approximately 0.039 ng/well.

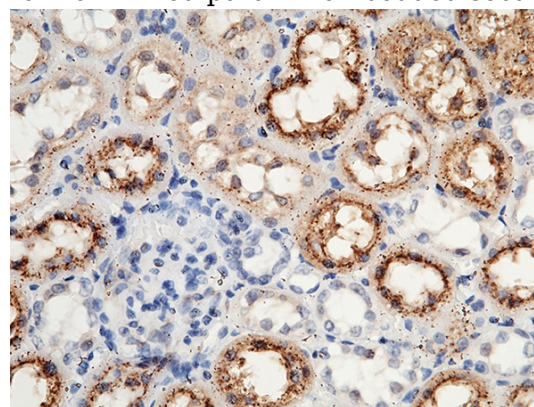
IHC-P: 0.1-2 µg/mL

Validations



Cystatin C / CST3 Antibody, Rabbit PAb, Antigen Affinity Purified, Immunohistochemistry

Immunochemical staining of rat CST3 in rat brain with rabbit polyclonal antibody (1 µg/mL, formalin-fixed paraffin embedded sections).



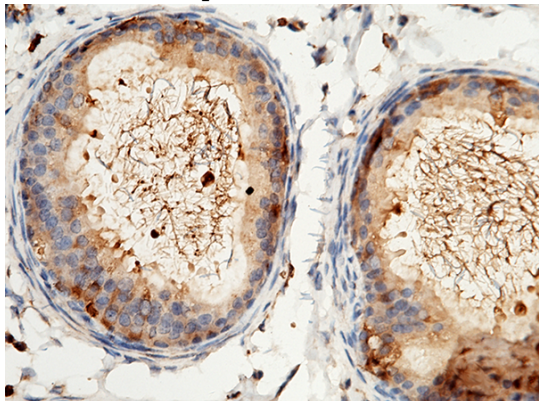
Cystatin C / CST3 Antibody, Rabbit PAb, Antigen Affinity Purified, Immunohistochemistry

Anti-Cystatin C / CST3 antibody



Catalog Number: 103467

Immunochemical staining of rat CST3 in rat kidney with rabbit polyclonal antibody (1 µg/mL, formalin-fixed paraffin embedded sections).



Cystatin C / CST3 Antibody, Rabbit PAb, Antigen Affinity Purified, Immunohistochemistry

Immunochemical staining of rat CST3 in rat testis with rabbit polyclonal antibody (1 µg/mL, formalin-fixed paraffin embedded sections).