

# Anti-p44/42 MAPK (ERK1/2) Rabbit antibody



Catalog Number: 169067

## Product name

Polyclonal

Anti-p44/42 MAPK (ERK1/2) Rabbit antibody

## Ig Type

## Specificity

Rabbit IgG

Human, Mouse, Rat

## Applications

## Antibody description

WB

p44/42 MAPK (ERK1/2) Rabbit polyclonal antibody

## Dilutions

## Preparation

WB:1/1000

Antigen: Peptide sequence around aa. 202~206 (T-E-Y-V-A) derived from Human p44/42 MAP Kinase.

## Validations

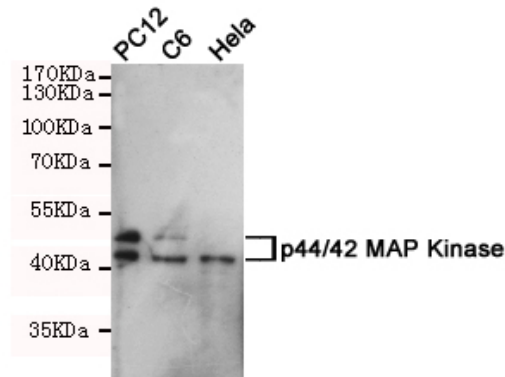
## Formulation

Supplied at 1.0mg/mL in phosphate buffered saline (without Mg<sup>2+</sup> and Ca<sup>2+</sup>), pH 7.4, 150mM NaCl, 0.02% sodium azide and 50% glycerol.

## Storage

Store at 4°C short term. Store at -20°C long term. Avoid freeze / thaw cycle.

## Clonality



Western blot analysis of extracts from HeLa, PC-12 and C6 cells using p44/42 MAP Kinase (Ab-204) rabbit pAb (1:1000 diluted). Predicted band size: 42/44 kDa. Observed band size: 42/44 kDa.