

LIN28B Polyclonal Antibody



Catalog Number: 166067

Product name

LIN28B Polyclonal Antibody

Specificity

Human

Antibody description

Polyclonal antibody to LIN28B

Preparation

Antigen: A synthetic peptide of human LIN28B

Formulation

PBS with 0.02% sodium azide, pH7.3.

Storage

Store at 4°C. Avoid freeze / thaw cycles.

Clonality

Polyclonal

Ig Type

Rabbit IgG

Applications

WB, IHC, IF, FC

Dilutions

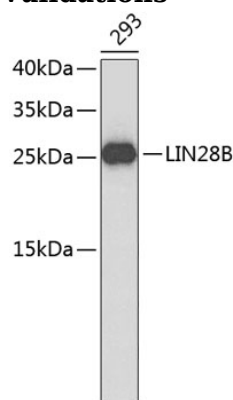
WB 1:500 - 1:2000

IHC 1:50 - 1:200

IF 1:20 - 1:50

FC 1:20 - 1:50

Validations



Western blot - LIN28B Polyclonal Antibody

Western blot analysis of extracts of HEK-293 cells, using LIN28B antibody. Secondary antibody: HRP Goat Anti-Rabbit IgG (H+L) at 1:10000 dilution. Lysates/proteins: 25ug per lane. Blocking buffer: 3% nonfat dry milk in TBST.