

IMMP2L antibody



Catalog Number: 111757

Product name

IMMP2L antibody

Recommended Dilution:

WB: 1:1000-1:10000

Immunogen

IHC: 1:20-1:200

[Human IMMP2L Recombinant protein \(His tag\)](#)

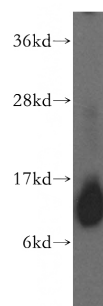
Validations

Specificity

Human, Mouse, Rat; other species not tested.

Antibody description

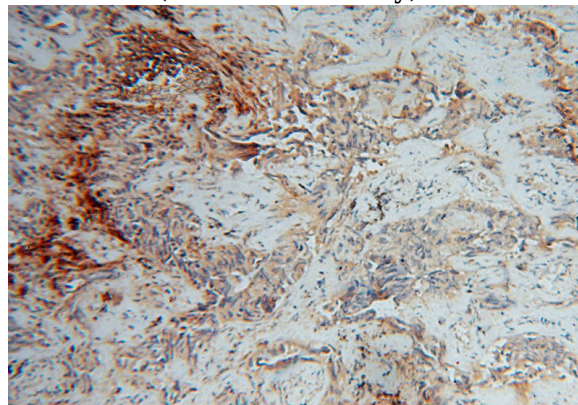
IMMP2L Rabbit Polyclonal antibody. Positive IHC detected in human lung cancer tissue. Positive WB detected in human kidney tissue, human heart tissue, mouse skeletal muscle tissue. Observed molecular weight by Western-blot: 12 kDa



Preparation

This antibody was obtained by immunization of IMMP2L recombinant protein (Accession Number: NM_001350962). Purification method: Antigen affinity purified.

human kidney tissue were subjected to SDS PAGE followed by western blot with Catalog No:111757(IMMP2L antibody) at dilution of 1:500



Formulation

PBS with 0.02% sodium azide and 50% glycerol pH 7.3.

Storage

Store at -20°C. DO NOT ALIQUOT

Clonality

Polyclonal

Ig Type

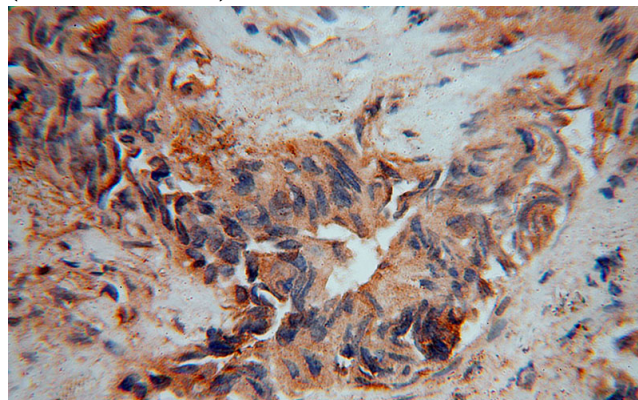
Rabbit IgG

Applications

ELISA, WB, IHC

Dilutions

Immunohistochemical of paraffin-embedded human lung cancer using Catalog No:111757(IMMP2L antibody) at dilution of 1:100 (under 10x lens)



IMMP2L antibody



Catalog Number: 111757

Immunohistochemical of paraffin-embedded
human lung cancer using Catalog

No:111757(IMMP2L antibody) at dilution of 1:100
(under 40x lens)