

SLIT2-Specific antibody



Catalog Number: 115357

Product name

SLIT2-Specific antibody

Specificity

Human, Mouse, Rat; other species not tested.

Antibody description

SLIT2-Specific Rabbit Polyclonal antibody. Positive FC detected in HEK-293 cells. Positive IHC detected in human kidney tissue, human breast cancer tissue. Positive WB detected in HEK-293 cells, mouse brain tissue. Observed molecular weight by Western-blot: 130-140 kDa, 200 kDa

Preparation

This antibody was obtained by immunization of Peptide (Accession Number: NM_004787). Purification method: Antigen affinity purified.

Formulation

PBS with 0.1% sodium azide and 50% glycerol pH 7.3.

Storage

Store at -20°C. DO NOT ALIQUOT

Clonality

Polyclonal

Ig Type

Rabbit IgG

Applications

ELISA, IHC, WB, FC

Dilutions

Recommended Dilution:

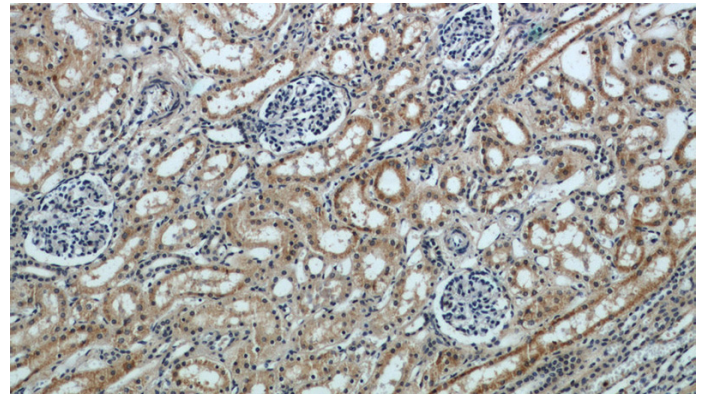
WB: 1:200-1:2000

IHC: 1:20-1:200

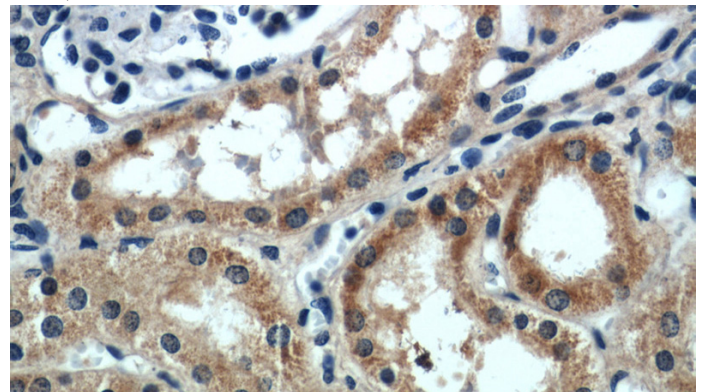
Validations



HEK-293 cells were subjected to SDS PAGE followed by western blot with Catalog No:115357(SLIT2-Specific antibody) at dilution of 1:600



Immunohistochemical of paraffin-embedded human kidney using Catalog No:115357(SLIT2-Specific antibody) at dilution of 1:50 (under 10x lens)



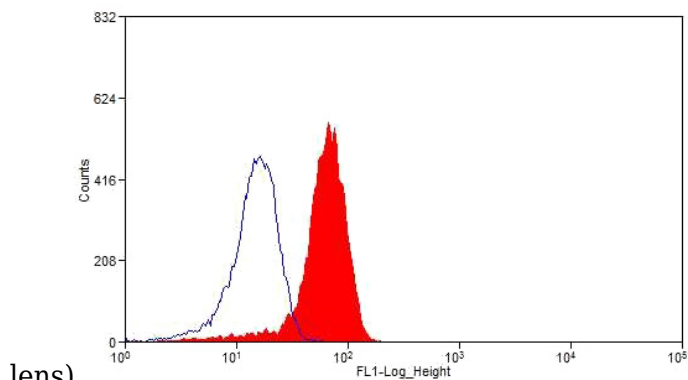
Immunohistochemical of paraffin-embedded human kidney using Catalog No:115357(SLIT2-

SLIT2-Specific antibody



Catalog Number: 115357

Specific antibody) at dilution of 1:50 (under 40x



1X10⁶ HEK-293 cells were stained with 0.2ug SLIT2-Specific antibody (Catalog No:115357, red) and control antibody (blue). Fixed with 4% PFA blocked with 3% BSA (30 min). Alexa Fluor 488-conjugated AffiniPure Goat Anti-Rabbit IgG(H+L) with dilution 1:1500.