

Rat SELP / P Selectin (Fc Tag) recombinant protein



Catalog Number: 503357

General Information

Protein Construction

A DNA sequence encoding the rat Selp (AAI01920.1) (Met1-Gln700) was expressed with the Fc region of human IgG1 at the C-terminus.

Organism

Rat

Expression Host

Human Cells

QC Testing

Activity

Measured by the ability of the immobilized protein to support the adhesion of U937 human histiocytic lymphoma cells.

When 5×10^4 cells/well are added to rat SELP/Fc Chimera coated plates (10 $\mu\text{g}/\text{mL}$ with 100 $\mu\text{L}/\text{well}$), > 40% cells will adhere for 1 hour incubation at 37°C.

Purity

> 95 % as determined by SDS-PAGE.

Endotoxin

<1.0 EU per μg protein as determined by the LAL method.

Stability

Samples are stable for up to twelve months from date of receipt at -70°C

Predicted N terminal

Trp 42

Molecular Mass

The recombinant rat Selp consists 897 amino acids and predicts a molecular mass of 98.7 kDa.

Formulation

Lyophilized from sterile PBS, pH 7.4.

1. 5 % trehalose and mannitol are added as protectants before lyophilization.

2. Please contact us for any concerns or special requirements.

Usage Guide

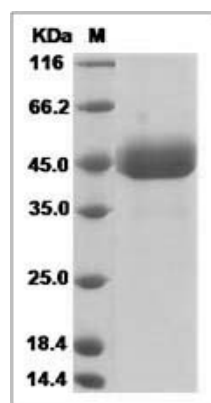
Storage

Store it under sterile conditions at -20°C to -80°C. It is recommended that the protein be aliquoted for optimal storage. Avoid repeated freeze-thaw cycles.

Reconstitution

Adding sterile water, prepare a stock solution of 0.25 mg/ml. Concentration is measured by UV-Vis.

SDS-PAGE



Rat SELP / P Selectin Protein (Fc Tag) SDS-PAGE