

# Anti-CLIC4 antibody



Catalog Number: 103357

## Product name

Anti-CLIC4 antibody

## Immunogen

[Human CLIC4 \(His Tag\) recombinant protein](#)

## Specificity

Human CLIC4

## Antibody description

Rabbit polyclonal to CLIC4

## Preparation

Produced in rabbits immunized with purified, recombinant Human CLIC4 (rh CLIC4; Q9Y696-1; Ala 2-Lys 253). CLIC4 specific IgG was purified by Human CLIC4 affinity chromatography.

## Formulation

0.2 µm filtered solution in PBS with 5% trehalose

## Storage

This antibody can be stored at 2°C-8°C for one month without detectable loss of activity. Antibody products are stable for twelve months from date of receipt when stored at -20°C to -80°C.

Preservative-Free.

Sodium azide is recommended to avoid contamination (final concentration 0.05%-0.1%). It is toxic to cells and should be disposed of properly. Avoid repeated freeze-thaw cycles.

## Clonality

Polyclonal

## Ig Type

Rabbit IgG

## Applications

ELISA, WB, IP

## Dilutions

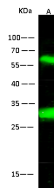
WB: 2-10 µg/mL

ELISA: 0.1-0.2 µg/mL

This antibody can be used at 0.1-0.2 µg/mL with the appropriate secondary reagents to detect Human CLIC4. The detection limit for Human CLIC4 is approximately 0.039 ng/well.

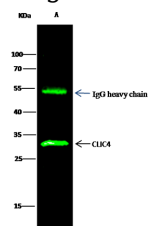
IP: 1-4 µg/mg of lysate

## Validations



Items	Lanes
Sample (whole cell lysate)	A: Raji
Sample Volume (µg/lane)	30
Gel	13% SDS-PAGE reducing gel
Recommended Concentration	2-10 µg/ml
Secondary Antibody	DyLight 800 labeled Antibody to Rabbit IgG (H+L), at 1:5000 dilution
Developed using Odyssey imaging system.	
Explanation	Predicted band size: 29 kDa Observed band size: 29 kDa Additional bands at: 60 kDa [We are unsure as to the identity of these extra bands. They are possible non-specific bindings].

## CLIC4 Antibody, Rabbit PAb, Antigen Affinity



Items	Lanes
Sample (whole cell lysate)	A: HeLa
Sample quantity	0.5 mg
IP antibody quantity	2 µg
Protein G agarose	15 µl of 50% Protein G Agarose
Gel	13% SDS-PAGE reducing gel
Primary antibody	CLIC4 antibody at 5 µg/ml [Cat# 12271-8902]
Secondary antibody	DyLight 800-labeled antibody to rabbit IgG (H+L) at 1:5000 dilution.

## Purified, Western blot

## CLIC4 Antibody, Rabbit PAb, Antigen Affinity Purified