

HISPPD1 antibody



Catalog Number: 111357

Product name

Polyclonal

HISPPD1 antibody

Ig Type

Specificity

Rabbit IgG

Human; other species not tested.

Applications

Antibody description

ELISA, WB

HISPPD1 Rabbit Polyclonal antibody. Positive WB detected in K-562 cells, Jurkat cells. Observed molecular weight by Western-blot: 138-140 kDa

Dilutions

Recommended Dilution:

Preparation

WB: 1:500-1:5000

This antibody was obtained by immunization of HISPPD1 recombinant protein (Accession Number: NM_015216). Purification method: Antigen affinity purified.

Validations

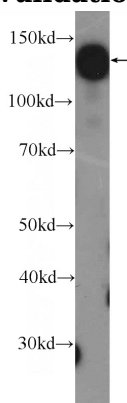
Formulation

PBS with 0.1% sodium azide and 50% glycerol pH 7.3.

Storage

Store at -20°C. DO NOT ALIQUOT

Clonality



K-562 cells were subjected to SDS PAGE followed by western blot with Catalog No:111357(HISPPD1 Antibody) at dilution of 1:1000