

# ERGIC2 antibody



Catalog Number: 110357

## Product name

ERGIC2 antibody

IP: 1:500-1:5000

IHC: 1:20-1:200

## Specificity

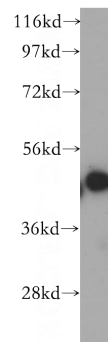
Human; other species not tested.

IF: 1:50-1:500

## Antibody description

ERGIC2 Rabbit Polyclonal antibody. Positive IF detected in HepG2 cells. Positive IHC detected in human prostate cancer tissue. Positive IP detected in HepG2 cells. Positive WB detected in HepG2 cells. Observed molecular weight by Western-blot: 45-50 kDa

## Validations



## Preparation

This antibody was obtained by immunization of ERGIC2 recombinant protein (Accession Number: XM\_024449009). Purification method: Antigen affinity purified.

HepG2 cells were subjected to SDS PAGE followed by western blot with Catalog No:110357(ERGIC2 antibody) at dilution of 1:500

## Formulation

PBS with 0.1% sodium azide and 50% glycerol pH 7.3.

## Storage

Store at -20°C. DO NOT ALIQUOT

## Clonality

Polyclonal

## Ig Type

Rabbit IgG

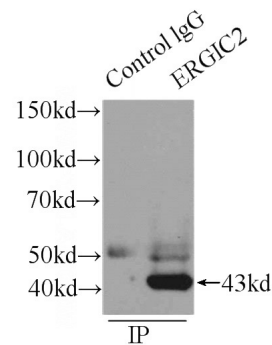
## Applications

ELISA, WB, IHC, IP, IF

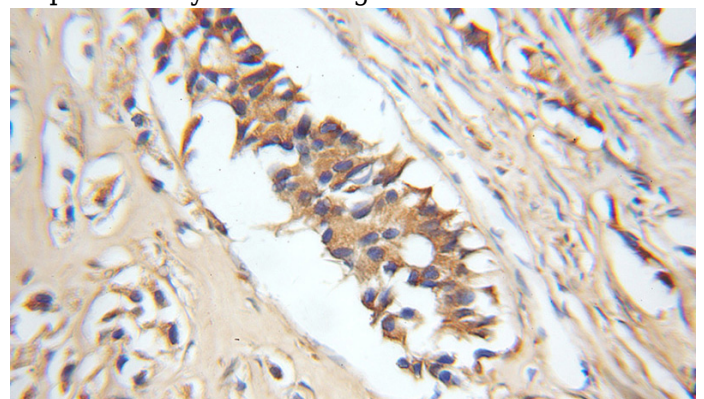
## Dilutions

Recommended Dilution:

WB: 1:500-1:5000



IP Result of anti-ERGIC2 (IP:Catalog No:110357, 4ug; Detection:Catalog No:110357 1:1000) with HepG2 cells lysate 2900ug.



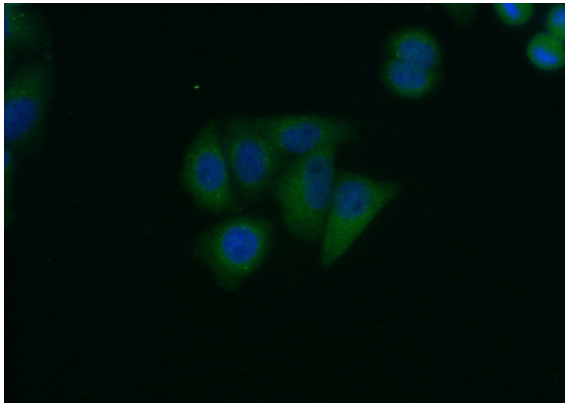
# ERGIC2 antibody



Catalog Number: 110357

---

Immunohistochemical of paraffin-embedded human prostate cancer using Catalog No:110357(ERGIC2 antibody) at dilution of 1:50 (under 10x lens)



Immunofluorescent analysis of (10% Formaldehyde) fixed HepG2 cells using Catalog No:110357(ERGIC2 Antibody) at dilution of 1:50 and Alexa Fluor 488-conjugated AffiniPure Goat Anti-Rabbit IgG(H+L)