

# RHOA antibody

Catalog Number: 114657

## Product name

RHOA antibody

WB: 1:200-1:1000

IHC: 1:20-1:200

## Specificity

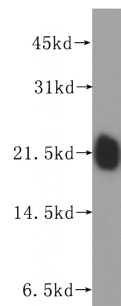
Human, Mouse, Rat; other species not tested.

IF: 1:10-1:100

## Antibody description

RHOA Rabbit Polyclonal antibody. Positive WB detected in human brain tissue, HeLa cells, MCF7 cells, mouse brain tissue, rat brain tissue. Positive IHC detected in human colon cancer tissue, human lymphoma tissue. Positive IF detected in HeLa cells. Observed molecular weight by Western-blot: 22 kDa

## Validations



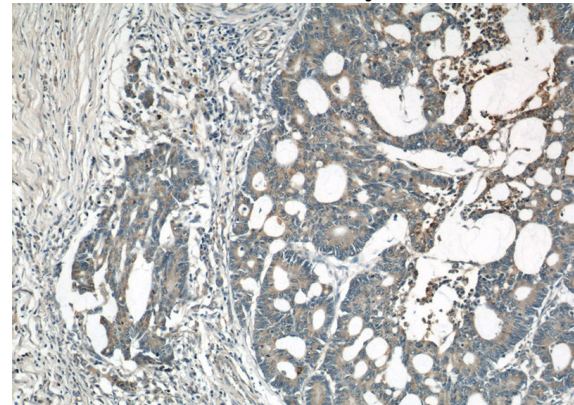
## Preparation

This antibody was obtained by immunization of RHOA recombinant protein (Accession Number: NM\_001313941). Purification method: Antigen affinity purified.

human brain tissue were subjected to SDS PAGE followed by western blot with Catalog No:114657(RHOA antibody) at dilution of 1:400

## Formulation

PBS with 0.1% sodium azide and 50% glycerol pH 7.3.



## Storage

Store at -20°C. DO NOT ALIQUOT

## Clonality

Polyclonal

## Ig Type

Rabbit IgG

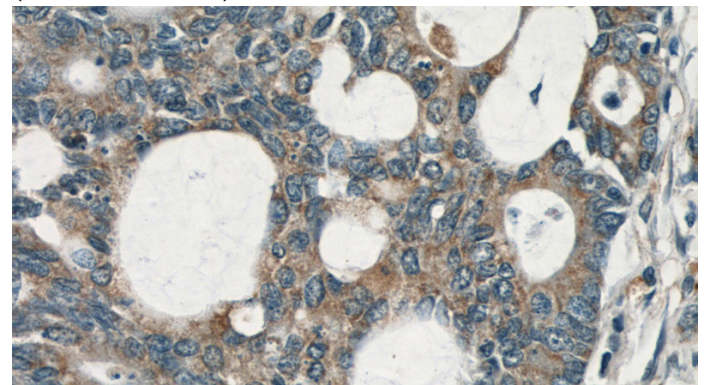
## Applications

ELISA, WB, IHC, IF

## Dilutions

Recommended Dilution:

Immunohistochemical of paraffin-embedded human colon cancer using Catalog No:114657(RHOA antibody) at dilution of 1:50 (under 10x lens)

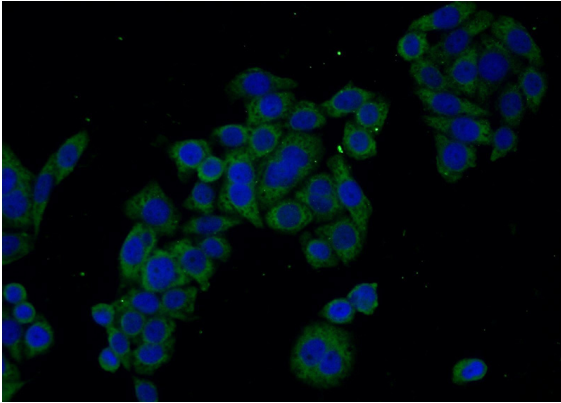


# RHOA antibody

Catalog Number: 114657

---

Immunohistochemical of paraffin-embedded human colon cancer using Catalog No:114657(RHOA antibody) at dilution of 1:50 (under 40x lens)



Immunofluorescent analysis of HeLa cells using Catalog No:114657(RHOA Antibody) at dilution of 1:25 and Alexa Fluor 488-conjugated AffiniPure Goat Anti-Rabbit IgG(H+L)