

Anti-CD146/MCAM antibody



Catalog Number: 106257

Product name

Anti-CD146/MCAM antibody

Immunogen

[Mouse CD146/MCAM \(His Tag\) recombinant protein](#)

Specificity

Mouse CD146 / MCAM

Antibody description

Rabbit polyclonal to CD146/MCAM

Preparation

Produced in rabbits immunized with purified, recombinant Mouse CD146 / MCAM (rM CD146 / MCAM; Q8R2Y2-1; Met1-Val563). CD146 / MCAM specific IgG was purified by Mouse CD146 / MCAM affinity chromatography.

Formulation

0.2 µm filtered solution in PBS with 5% trehalose

Storage

This antibody can be stored at 2°C-8°C for one month without detectable loss of activity. Antibody products are stable for twelve months from date of receipt when stored at -20°C to -80°C. Preservative-Free.

Sodium azide is recommended to avoid contamination (final concentration 0.05%-0.1%). It is toxic to cells and should be disposed of properly. Avoid repeated freeze-thaw cycles.

Clonality

Polyclonal

Ig Type

Rabbit IgG

Applications

ELISA, WB, IHC-P, IP

Dilutions

WB: 2-5 µg/mL

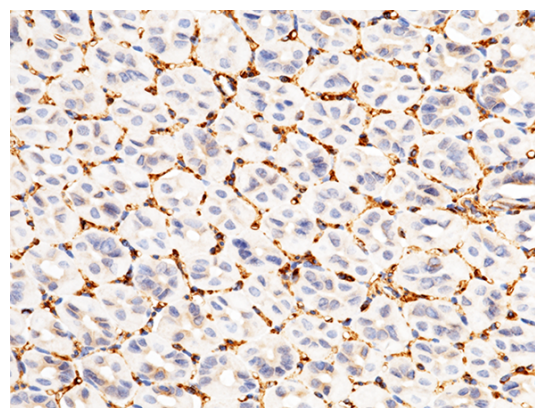
ELISA: 0.1-0.2 µg/mL

This antibody can be used at 0.1-0.2 µg/mL with the appropriate secondary reagents to detect Mouse CD146 / MCAM. The detection limit for Mouse CD146 / MCAM is approximately 0.039 ng/well.

IHC-P: 0.1-2 µg/mL

IP: 4-6 µg/mg of lysate

Validations



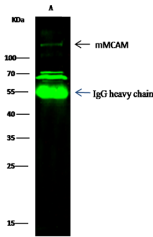
CD146 / MCAM Antibody, Rabbit PAb, Antigen Affinity Purified, Immunohistochemistry

Immunochemical staining of mouse MCAM in mouse stomach with rabbit polyclonal antibody (1 µg/mL, formalin-fixed paraffin embedded

Anti-CD146/MCAM antibody



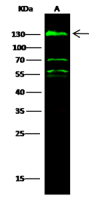
Catalog Number: 106257



Item	Lanes	A
Sample (whole cell lysate)		HeLa
Sample quantity		0.5 mg
IP antibody quantity		2 µg
Protein G agarose		15 µl of 50% Protein G Agarose
Gel		13% SDS-PAGE reducing gel
Primary antibody		mMCAM antibody at 2 µg/ml [Cat# 50/94-RP02]
Secondary antibody		DyLight 800-labeled antibody to rabbit IgG (H+L), at 1:5000 dilution.

sections).

CD146 / MCAM Antibody, Rabbit PAb, Antigen



Item	Lanes	A
Sample (membrane lysate)		HeLa
Sample Volume (µg/lane)		30
Gel		13% SDS-PAGE reducing gel
Recommended Concentration		2.5 µg/ml
Secondary Antibody		DyLight 800-labeled Antibody To Rabbit IgG (H+L), at 1:5000 dilution.

Affinity Purified

CD146 / MCAM Antibody, Rabbit PAb, Antigen
Affinity Purified, Western blot