

# SLC30A1 Polyclonal Antibody



Catalog Number: 166257

## Product name

SLC30A1 Polyclonal Antibody

## Specificity

Human, Mouse, Rat

## Antibody description

Polyclonal antibody to SLC30A1

## Preparation

Antigen: A synthetic peptide corresponding to a sequence within amino acids 250-350 of human SLC30A1 (NP\_067017.2).

## Formulation

PBS with 0.02% sodium azide, 50% glycerol, pH7.3.

## Storage

Store at -20°C. Avoid freeze / thaw cycles.

## Clonality

Polyclonal

## Ig Type

Rabbit IgG

## Applications

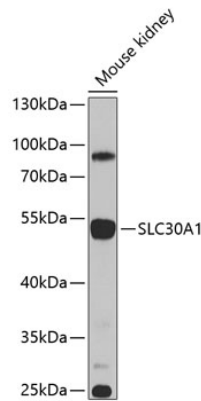
WB, IHC

## Dilutions

WB 1:500 - 1:2000

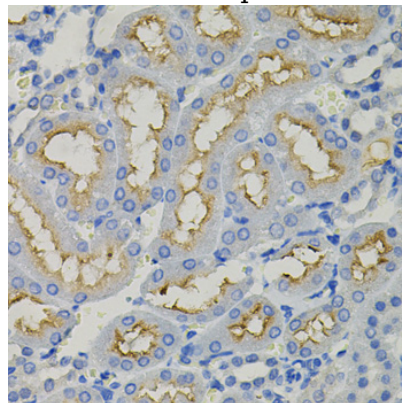
IHC 1:50 - 1:200

## Validations



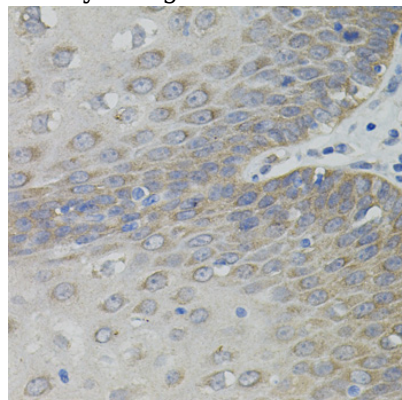
## Western blot - SLC30A1 Polyclonal Antibody

Western blot analysis of extracts of mouse kidney, using SLC30A1 antibody at 1:1000 dilution. Secondary antibody: HRP Goat Anti-Rabbit IgG (H+L) at 1:10000 dilution. Lysates/proteins: 25ug per lane. Blocking buffer: 3% nonfat dry milk in TBST. Detection: ECL Enhanced Kit. Exposure time: 60s.



## Immunohistochemistry - SLC30A1 Polyclonal Antibody

Immunohistochemistry of paraffin-embedded rat kidney using SLC30A1 antibody (40x lens).



# SLC30A1 Polyclonal Antibody

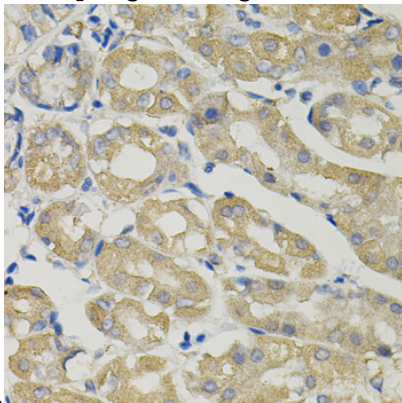


Catalog Number: 166257

---

Immunohistochemistry - SLC30A1 Polyclonal Antibody

Immunohistochemistry of paraffin-embedded human esophagus using SLC30A1 antibody (40x



lens).

Immunohistochemistry - SLC30A1 Polyclonal Antibody

Immunohistochemistry of paraffin-embedded human stomach using SLC30A1 antibody (40x lens).