

General Information

Gene Name Synonym

Pluripoietin

Protein Construction

A DNA sequence encoding the human GCSF isoform b (NP_757373.1) (Ala30-Pro204) was expressed.

Organism

Human

Expression Host

E. coli

QC Testing

Activity

Measured in a cell proliferation assay using NFS-60 mouse myelogenous leukemia lymphoblast cells.

The ED₅₀ for this effect is typically 0.04-0.2 ng/mL.

Purity

> 90 % as determined by SDS-PAGE

Endotoxin

Please contact us for more information.

Stability

Samples are stable for up to twelve months from date of receipt at -70°C

Predicted N terminal

Ala 30

Molecular Mass

The recombinant human GCSFb consists of 175 amino acids and has a calculated molecular mass of 18.7 kDa. It migrates as an approximately 18 kDa protein in SDS-PAGE under reducing conditions.

Formulation

Lyophilized from sterile sterile PBS, pH 7.4.

1. 5 % trehalose and mannitol are added as protectants before lyophilization.

2. Please contact us for any concerns or special requirements.

Usage Guide

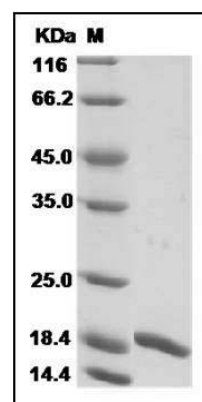
Storage

Store it under sterile conditions at -20°C to -80°C. It is recommended that the protein be aliquoted for optimal storage. Avoid repeated freeze-thaw cycles.

Reconstitution

Adding sterile water, prepare a stock solution of 0.25 mg/ml. Concentration is measured by UV-Vis.

SDS-PAGE



Human G-CSF / CSF3 Protein (isoform b) SDS-PAGE