

Human Complement component 7 (Fc Tag) recombinant protein



Catalog Number: 500257

General Information

Protein Construction

A DNA sequence encoding the human C7 (P10643) (Met1-Gln843) was expressed, fused with the Fc region of human IgG1 at the C-terminus.

Organism

Human

Expression Host

Human Cells

QC Testing

Purity

> 90 % as determined by SDS-PAGE

Endotoxin

< 1.0 EU per μg of the protein as determined by the LAL method

Stability

Samples are stable for up to twelve months from date of receipt at -70°C

Predicted N terminal

Ser 23

Molecular Mass

The recombinant human C7 /Fc is a disulfide-linked homodimer. The reduced monomer comprises 1062 amino acids and has a predicted molecular mass of 118 kDa. The apparent

molecular mass of the protein is approximately 118 kDa in SDS-PAGE under reducing conditions.

Formulation

Lyophilized from sterile PBS, pH 7.4

1. 5 % trehalose and mannitol are added as protectants before lyophilization.

2. Please contact us for any concerns or special requirements.

Usage Guide

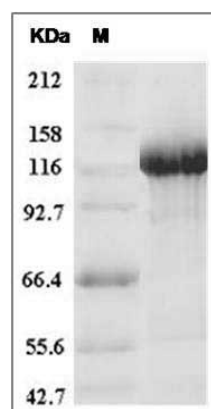
Storage

Store it under sterile conditions at -20°C to -80°C . It is recommended that the protein be aliquoted for optimal storage. Avoid repeated freeze-thaw cycles.

Reconstitution

Adding sterile water, prepare a stock solution of 0.25 mg/ml. Concentration is measured by UV-Vis.

SDS-PAGE



Human C7 / Complement component 7 Protein (Fc Tag) SDS-PAGE