

# NAS1/SLC13A1 antibody



Catalog Number: 112957

## Product name

NAS1/SLC13A1 antibody

## Specificity

Human, Mouse; other species not tested.

## Antibody description

NAS1/SLC13A1 Rabbit Polyclonal antibody. Positive WB detected in HEK-293 cells, mouse kidney tissue. Observed molecular weight by Western-blot: 66 kDa

## Preparation

This antibody was obtained by immunization of NAS1/SLC13A1 recombinant protein (Accession Number: NM\_022444). Purification method: Antigen affinity purified.

## Formulation

PBS with 0.1% sodium azide and 50% glycerol pH 7.3.

## Storage

Store at -20°C. DO NOT ALIQUOT

## Clonality

Polyclonal

## Ig Type

Rabbit IgG

## Applications

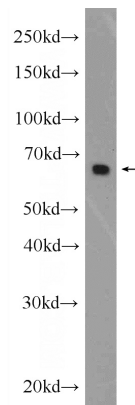
ELISA, WB

## Dilutions

Recommended Dilution:

WB: 1:500-1:5000

## Validations



HEK-293 cells were subjected to SDS PAGE followed by western blot with Catalog No:112957(SLC13A1 Antibody) at dilution of 1:1000