

Human C4.4A/LYPD3 (His Tag) recombinant protein



Catalog Number: 502957

General Information

Gene Name Synonym

cDNA PSEC0157 fis, clone PLACE1008238, highly similar to Ly6/PLAUR domain-containing protein 3; cDNA, FLJ95643, Homo sapiens GPI-anchored metastasis-associated protein homolog(C4.4A)

Protein Construction

A DNA sequence encoding the human LYPD3 (NP_055215.2) C-terminal segment (Met 1-His 286) was expressed, with a polyhistidine tag at the C-terminus.

Organism

Human

Expression Host

Human Cells

QC Testing

Purity

> 95 % as determined by SDS-PAGE

Endotoxin

< 1.0 EU per μg of the protein as determined by the LAL method

Stability

Samples are stable for up to twelve months from date of receipt at -70°C

Predicted N terminal

Leu 31

Molecular Mass

The recombinant human LYPD3 consists of 267 amino acids and predicts a molecular mass of 28.3 kDa. In SDS-PAGE under reducing conditions, the apparent molecular mass of rhLYPD3 is approximately 45-60 kDa due to glycosylation.

Formulation

Lyophilized from sterile PBS, pH 7.4

1. 5 % trehalose and mannitol are added as protectants before lyophilization.

2. Please contact us for any concerns or special requirements.

Usage Guide

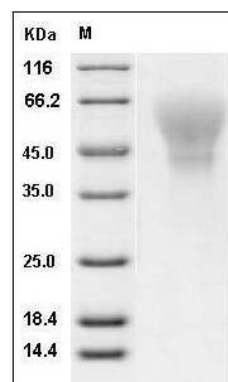
Storage

Store it under sterile conditions at -20°C to -80°C . It is recommended that the protein be aliquoted for optimal storage. Avoid repeated freeze-thaw cycles.

Reconstitution

Adding sterile water, prepare a stock solution of 0.25 mg/ml. Concentration is measured by UV-Vis.

SDS-PAGE



Human C4.4A / LYPD3 Protein (His Tag) SDS-PAGE