

## General Information

### Gene Name Synonym

CHD-4; EC 3.6.4.12; ATP-dependent helicase  
CHD4; Mi-2 autoantigen 218 kDa protein; Mi2-  
beta

### Protein Construction

A DNA sequence encoding the human CHD4  
(NP\_001264.2) 1554-1912 aa was fused with the  
N-terminal GST tag

### Organism

Human

### Expression Host

E. coli

## QC Testing

### Activity

Not tested.

### Endotoxin

Please contact the lab for more information.

### Stability

Store for up to 12 months at -20°C to -80°C as  
lyophilized powder.

### Formulation

Protein lyophilized in sterile PBS (58 mM  
Na<sub>2</sub>HPO<sub>4</sub>, 17 mM NaH<sub>2</sub>PO<sub>4</sub>, 68 mM NaCl, 100  
mM GSH, pH 8.0). Trehalose (5-8%) and mannitol

(5-8%) protectants were added before  
lyophilization.

## Usage Guide

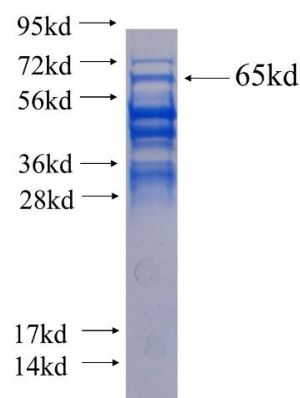
### Storage

Store it under sterile conditions at -20°C to -80°C.  
It is recommended that the protein be aliquoted  
for optimal storage. Avoid repeated freeze-thaw  
cycles.

### Reconstitution

Reconstitute at 0.25 µg/µl in sterile water for  
short-term storage. Reconstitution with 50%  
glycerol solution is recommended for longer term  
storage (see Stability and Storage for more  
details). If a different concentration is needed for  
your purposes please adjust the reconstitution  
volume as required (please note: the ion  
concentration of the final solution will vary  
according to the volume used). Note: Centrifuge  
vial before opening. When reconstituting, gently  
pipet and wash down the sides of the vial to  
ensure full recovery of the protein into solution.

## SDS-PAGE



Recombinant human CHD4 SDS-PAGE