

# SPATS2L antibody



Catalog Number: 115557

## Product name

SPATS2L antibody

IHC: 1:20-1:200

IF: 1:10-1:100

## Specificity

human, mouse, rat; other species not tested.

## Antibody description

SPATS2L Rabbit Polyclonal antibody. Positive IHC detected in human kidney. Positive IF detected in HepG2. Positive WB detected in HepG2 cells, mouse kidney tissue. Observed molecular weight by Western-blot: 54kd

## Preparation

This antibody was obtained by immunization of SPATS2L recombinant protein (Accession Number: NM\_001100424). Purification method: Antigen affinity purified.

## Formulation

PBS with 0.02% sodium azide and 50% glycerol pH 7.3.

## Storage

Store at -20°C. DO NOT ALIQUOT

## Clonality

Polyclonal

## Ig Type

Rabbit IgG

## Applications

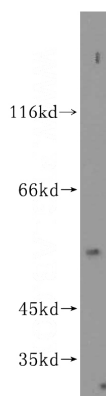
ELISA, WB, IHC, IF

## Dilutions

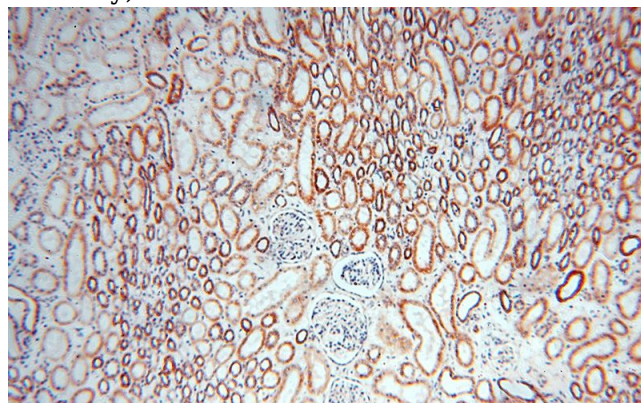
Recommended Dilution:

WB: 1:500-1:5000

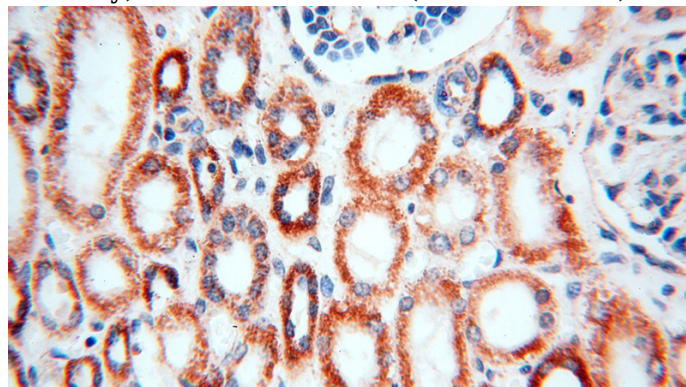
## Validations



HepG2 cells were subjected to SDS PAGE followed by western blot with Catalog No:115557(SPATS2L antibody) at dilution of 1:600



Immunohistochemical of paraffin-embedded human kidney using Catalog No:115557(SPATS2L antibody) at dilution of 1:100 (under 10x lens)



Immunohistochemical of paraffin-embedded human kidney using Catalog No:115557(SPATS2L

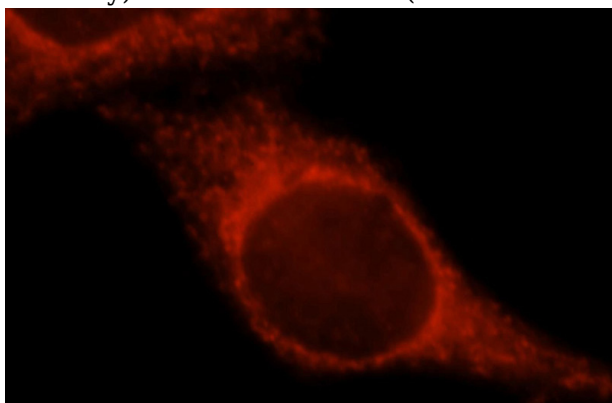
# SPATS2L antibody



Catalog Number: 115557

---

antibody) at dilution of 1:100 (under 40x lens)



Immunofluorescent analysis of HepG2 cells, using Loc26010 antibody Catalog No:115557 at 1:25 dilution and Rhodamine-labeled goat anti-rabbit IgG (red).