

# m6A Polyclonal Antibody

Catalog Number: 163557

## Product name

m6A Polyclonal Antibody

## Specificity

Human, Mouse, Rat, Other (Wide Range)

## Antibody description

Polyclonal antibody to m6A

## Preparation

Antigen: Chemical/ Small Molecule corresponding to N6-methyladenosine (m6A) conjugated to keyhole limpet haemocyanin.

## Formulation

PBS with 0.02% sodium azide, 50% glycerol, pH7.3.

## Storage

Store at -20°C. Avoid freeze / thaw cycles.

## Clonality

Polyclonal

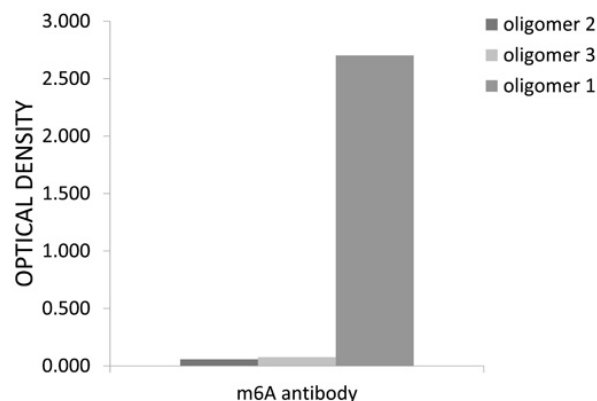
## Ig Type

Rabbit IgG

## Applications

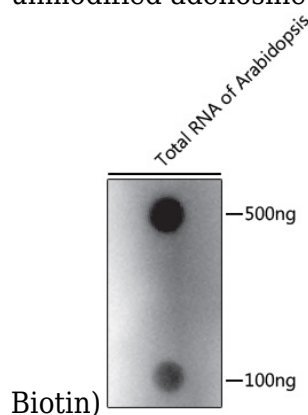
Nucleotide Array

## Validations



- m6A Polyclonal Antibody

The m6A rabbit polyclonal antibody (4µg, ) are tested in Nucleotide Array against N6-methyladenosine (m6A) and unmodified adenosine (100pmol of each oligomer). Oligomer 1 - N6-methyladenosine (m6A-CUGGUAACGAAUGGCU-G-Biotin) Oligomer 2 - unmodified adenosine (ACUGGUAACGAAUGGCU-G-Biotin) Oligomer 3 - unmodified adenosine (AAAAAAAAAAAAAAAAAAAA-



- m6A Polyclonal Antibody

The m6A rabbit polyclonal antibody (500ng/100ng, ) are tested in Nucleotide Array against total RNA of Arabidopsis. (This image is courtesy of an anonymous Abreview)