

# MCM7 antibody

Catalog Number: 112557

## Product name

MCM7 antibody

## Specificity

Human, Mouse, Rat; other species not tested.

## Antibody description

MCM7 Rabbit Polyclonal antibody. Positive WB detected in NIH/3T3 cells, A431 cells, HeLa cells, MCF7 cells. Positive IP detected in NIH/3T3 cells. Positive IF detected in NIH/3T3 cells. Positive IHC detected in human lung cancer tissue, human lymphoma tissue. Positive FC detected in Raji cells. Observed molecular weight by Western-blot: 81 kDa

## Preparation

This antibody was obtained by immunization of MCM7 recombinant protein (Accession Number: NM\_005916). Purification method: Antigen affinity purified.

## Formulation

PBS with 0.1% sodium azide and 50% glycerol pH 7.3.

## Storage

Store at -20°C. DO NOT ALIQUOT

## Clonality

Polyclonal

## Ig Type

Rabbit IgG

## Applications

ELISA, WB, IP, IHC, IF, FC

## Dilutions

Recommended Dilution:

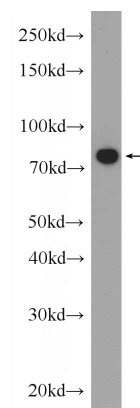
WB: 1:1000-1:10000

IP: 1:1000-1:10000

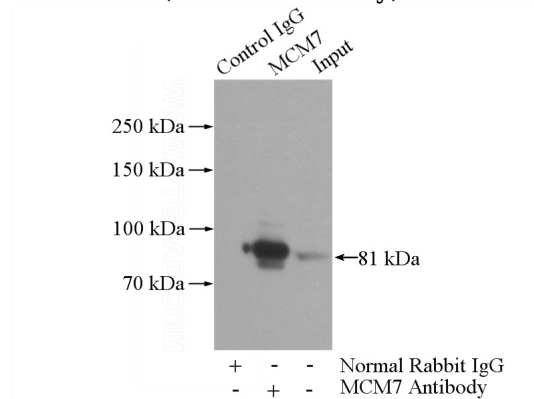
IHC: 1:20-1:200

IF: 1:50-1:500

## Validations



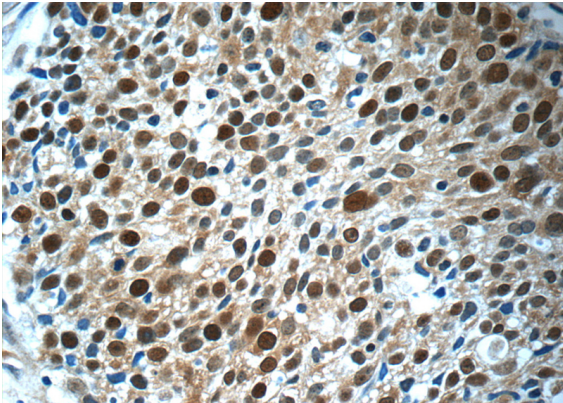
NIH/3T3 cells were subjected to SDS PAGE followed by western blot with Catalog No:112557(MCM7 Antibody) at dilution of 1:3000



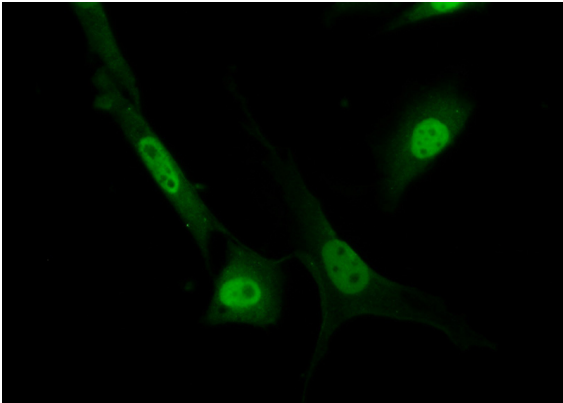
IP Result of anti-MCM7 (IP:Catalog No:112557, 4ug; Detection:Catalog No:112557 1:2000) with NIH/3T3 cells lysate 1600ug.

# MCM7 antibody

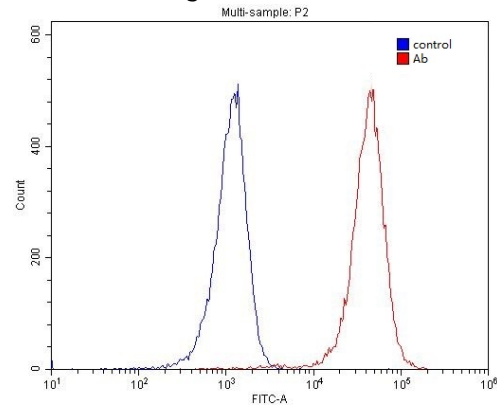
Catalog Number: 112557



Immunohistochemistry of paraffin-embedded human lung cancer tissue slide using Catalog No:112557(MCM7 Antibody) at dilution of 1:50 (under 40x lens)



Immunofluorescent analysis of (10% Formaldehyde) fixed NIH/3T3 cells using Catalog No:112557(MCM7 Antibody) at dilution of 1:50 and Alexa Fluor 488-conjugated AffiniPure Goat Anti-Rabbit IgG(H+L)



1X10<sup>6</sup> Raji cells were stained with 0.2ug MCM7 antibody (Catalog No:112557, red) and control antibody (blue). Fixed with 4% PFA blocked with 3% BSA (30 min). Alexa Fluor 488-conjugated AffiniPure Goat Anti-Rabbit IgG(H+L) with dilution 1:1500.