

HSF1 antibody

Catalog Number: 111557

Product name

HSF1 antibody

WB: 1:200-1:2000

IHC: 1:20-1:200

Specificity

Human, Mouse, Rat; other species not tested.

Antibody description

HSF1 Rabbit Polyclonal antibody. Positive IHC detected in human lung cancer tissue, human cervical cancer tissue. Positive WB detected in K-562 cells, HepG2 cells, MCF7 cells, mouse kidney tissue, mouse spleen tissue, mouse testis tissue. Observed molecular weight by Western-blot: 68-80kd

Preparation

This antibody was obtained by immunization of HSF1 recombinant protein (Accession Number: NM_005526). Purification method: Antigen affinity purified.

Formulation

PBS with 0.1% sodium azide and 50% glycerol pH 7.3.

Storage

Store at -20°C. DO NOT ALIQUOT

Clonality

Polyclonal

Ig Type

Rabbit IgG

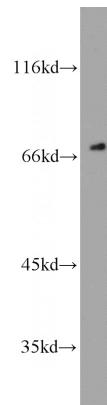
Applications

ELISA, WB, IHC

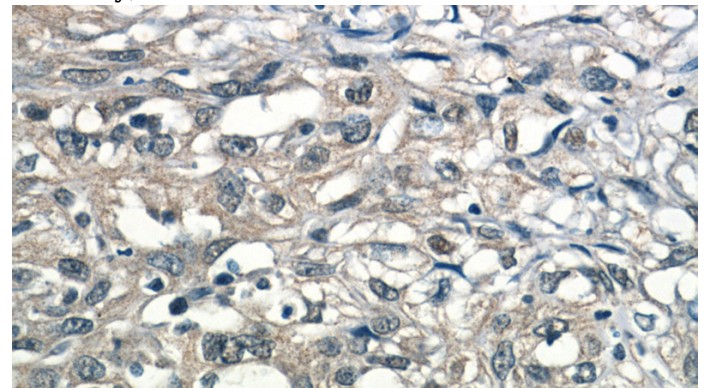
Dilutions

Recommended Dilution:

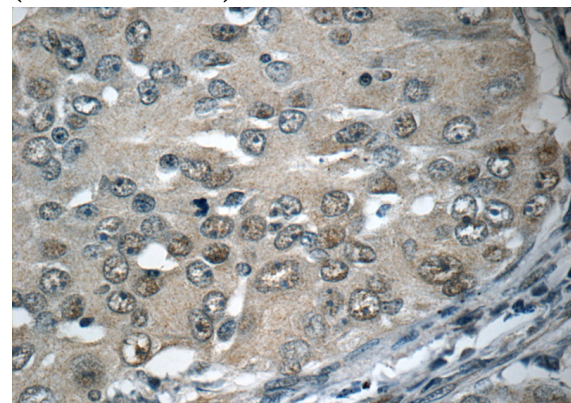
Validations



K-562 cells were subjected to SDS PAGE followed by western blot with Catalog No:111557(HSF1 antibody) at dilution of 1:1000



Immunohistochemistry of paraffin-embedded human cervical cancer tissue slide using Catalog No:111557(HSF1 Antibody) at dilution of 1:50 (under 40x lens)



Immunohistochemistry of paraffin-embedded

HSF1 antibody



Catalog Number: 111557

human lung cancer tissue slide using Catalog

No:111557(HSF1 Antibody) at dilution of 1:50
(under 40x lens)