

Mouse Prolactin Receptor (His & Fc Tag) recombinant protein



Catalog Number: 501557

General Information

Protein Construction

A DNA sequence encoding the extracellular domain of mouse PRLR (NP_035299.4) (Met 1-Asp 229) was fused with the C-terminal polyhistidine-tagged Fc region of human IgG1 at the C-terminus.

Organism

Mouse

Expression Host

Human Cells

QC Testing

Purity

> 90 % as determined by SDS-PAGE

Endotoxin

< 1.0 EU per μg of the protein as determined by the LAL method

Stability

Samples are stable for up to twelve months from date of receipt at -70°C

Predicted N terminal

Ser 21

Molecular Mass

The recombinant mouse PRLR/Fc chimera is a disulfide-linked homodimer. The reduced monomer consists of 457 amino acids and has a

calculated molecular mass of 52.5 kDa. As a result of glycosylation, the apparent molecular mass of the mouse PRLR/Fc monomer is approximately 65-70 kDa in SDS-PAGE under reducing conditions.

Formulation

Lyophilized from sterile PBS, pH 7.4

1. 5 % trehalose and mannitol are added as protectants before lyophilization.
2. Please contact us for any concerns or special requirements.

Usage Guide

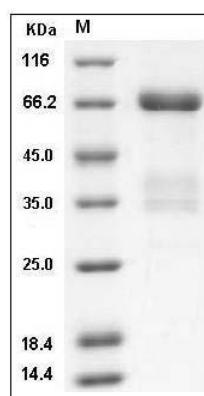
Storage

Store it under sterile conditions at -20°C to -80°C . It is recommended that the protein be aliquoted for optimal storage. Avoid repeated freeze-thaw cycles.

Reconstitution

Adding sterile water, prepare a stock solution of 0.25 mg/ml. Concentration is measured by UV-Vis.

SDS-PAGE



Mouse PRLR / Prolactin Receptor Protein (His & Fc Tag) SDS-PAGE