

Anti-Bcl-2 (3H5) Mouse antibody



Catalog Number: 168157

Product name

Anti-Bcl-2 (3H5) Mouse antibody

Specificity

Human, Mouse, Rat, Chicken

Antibody description

Bcl-2 (3H5) Mouse monoclonal antibody

Preparation

Antigen: Synthetic Peptide of Bcl-2

Formulation

PBS, pH 7.4, containing 0.02% sodium azide as Preservative and 50% Glycerol.

Storage

Store at 4°C short term. Store at -20°C long term. Avoid freeze / thaw cycle.

Clonality

Monoclonal

Ig Type

Mouse IgG1

Applications

ICC/IF, WB, IHC-P

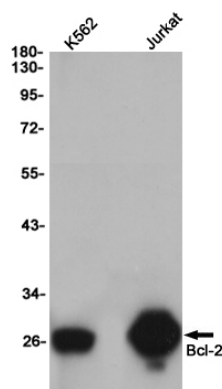
Dilutions

IF: 1/50-200

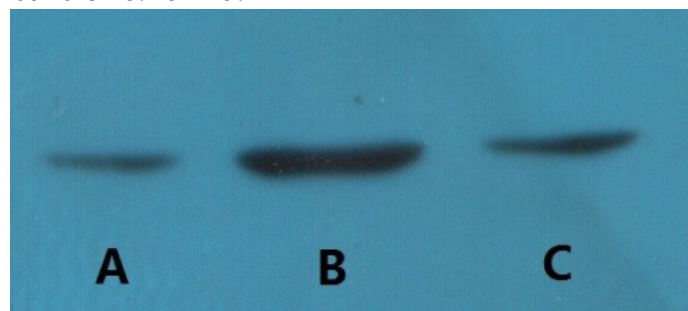
WB: 1/1000-2000

IHC: 1/200

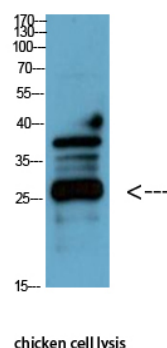
Validations



Western blot detection of Bcl-2 in K562, Jurkat cell lysates using Bcl-2 (3H5) Mouse mAb (1:1000 diluted). Predicted band size: 26 kDa. Observed band size: 26 kDa.



Western blot detection of Bcl-2 in human breast cancer cell line MCF-7 (A), MDA-MB-231 (B) and Cal51 (C) using Bcl-2 mouse mAb (YM3041, 1:2000 diluted). Predicted band size: 26 kDa. Observed band size: 26 kDa. Picture was kindly provided by our customer from Tianjin Medical University Cancer Institute and Hospital

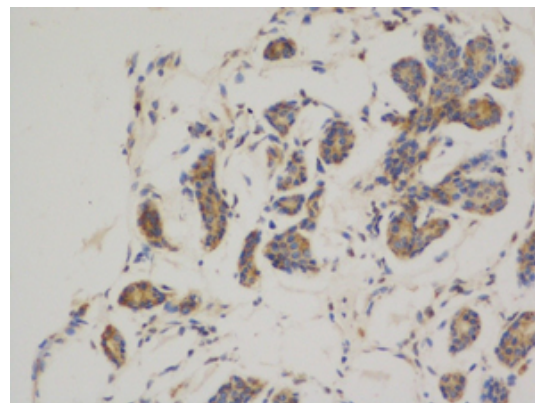
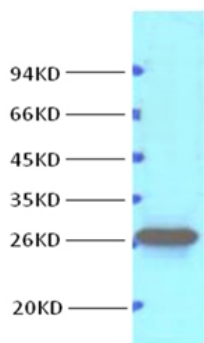


Western Blot analysis of chicken cell lysis using Antibody diluted at 1:1000

Anti-Bcl-2 (3H5) Mouse antibody



Catalog Number: 168157



Western blot analysis of HeLa, diluted at 1:1000

Immunohistochemical analysis of paraffin-embedded Human breast cancer. 1, Using Bcl-2 Mouse mAb (YM3041) diluted at 1:200 (4°, overnight). 2, High-pressure and temperature Citric acid, pH6.0 was used for antibody retrieval. 3, Secondary antibody was diluted at 1:200 (room temperature, 50min). Picture was kindly provided by our customer from Tianjin Medical University Cancer Institute and Hospital



Bcl-2



The picture was kindly provided by our customer

IHC staining of Human tonsil tissue paraffin-embedded, diluted at 1:200.