

# NFKB2 antibody

Catalog Number: 113157

## Product name

NFKB2 antibody

## Specificity

Human, Mouse, Rat; other species not tested.

## Antibody description

NFKB2 Rabbit Polyclonal antibody. Positive WB detected in multi-cells, HeLa cells. Positive IP detected in K-562 cells. Positive IHC detected in human pancreas cancer tissue, human liver cancer tissue. Positive IF detected in HeLa cells. Observed molecular weight by Western-blot: 105kd

## Preparation

This antibody was obtained by immunization of NFKB2 recombinant protein (Accession Number: NM\_001261403). Purification method: Antigen affinity purified.

## Formulation

PBS with 0.1% sodium azide and 50% glycerol pH 7.3.

## Storage

Store at -20°C. DO NOT ALIQUOT

## Clonality

Polyclonal

## Ig Type

Rabbit IgG

## Applications

ELISA, IHC, WB, IF, IP

## Dilutions

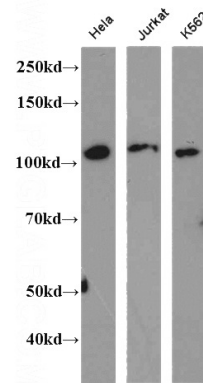
Recommended Dilution:

WB: N/AIP: 1:200-1:2000

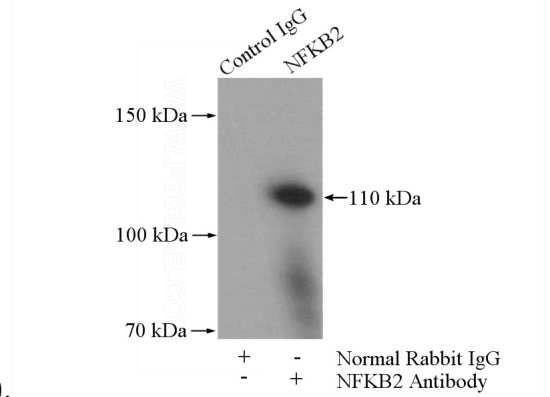
IHC: 1:20-1:200

IF: 1:10-1:100

## Validations

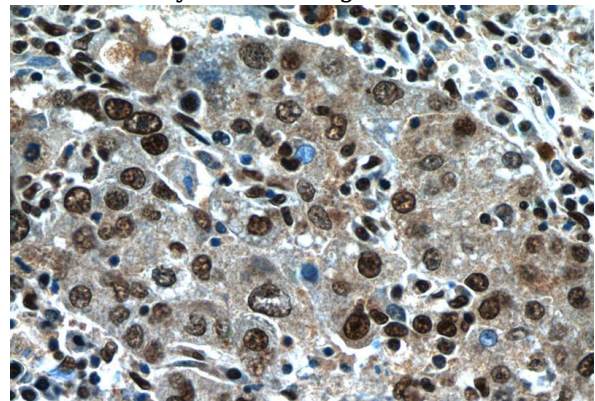


WB result of Catalog No:113157(NFKB2



antibody).

IP Result of anti-NFKB2 (IP:Catalog No:113157, 4ug; Detection:Catalog No:113157 1:600) with K-562 cells lysate 1200ug.



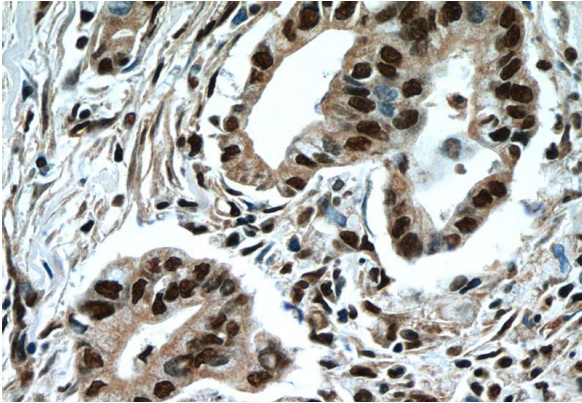
Immunohistochemistry of paraffin-embedded human liver cancer tissue slide using Catalog

# NFKB2 antibody

Catalog Number: 113157

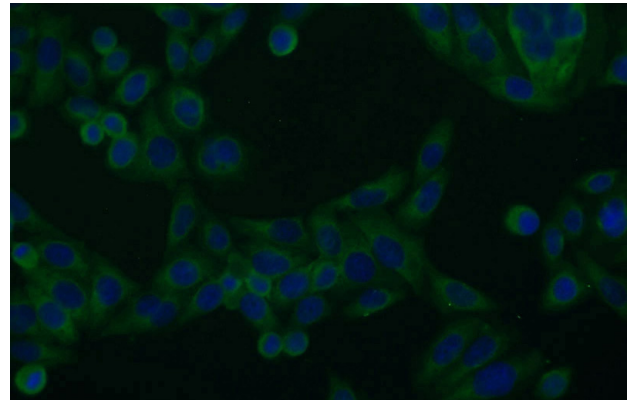
---

No:113157(NFKB2 Antibody) at dilution of 1:50  
(under 40x lens)



Immunohistochemistry of paraffin-embedded human pancreas cancer tissue slide using Catalog No:113157(NFKB2 Antibody) at dilution of 1:50

(under 40x lens)



Immunofluorescent analysis of HeLa cells using Catalog No:113157(NFKB2 Antibody) at dilution of 1:25 and Alexa Fluor 488-conjugated AffiniPure Goat Anti-Rabbit IgG(H+L)