

# LATS2-Specific antibody



Catalog Number: 112157

## Product name

LATS2-Specific antibody

WB: 1:500-1:5000

IHC: 1:20-1:200

## Specificity

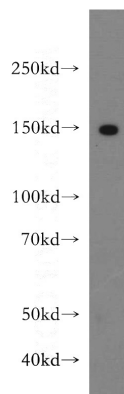
Human, Mouse; other species not tested.

IF: 1:20-1:200

## Antibody description

LATS2-Specific Rabbit Polyclonal antibody. Positive WB detected in SGC-7901 cells, human brain tissue, human heart tissue, mouse brain tissue. Positive IHC detected in human heart tissue, human colon tissue. Positive IF detected in HepG2 cells. Positive FC detected in HeLa cells. Observed molecular weight by Western-blot: 150kd

## Validations



## Preparation

This antibody was obtained by immunization of Peptide (Accession Number: NM\_014572). Purification method: Antigen affinity purified.

SGC-7901 cells were subjected to SDS PAGE followed by western blot with Catalog No:112157(LATS2-Specific antibody) at dilution of 1:500

## Formulation

PBS with 0.02% sodium azide and 50% glycerol pH 7.3.

## Storage

Store at -20°C. DO NOT ALIQUOT

## Clonality

Polyclonal

## Ig Type

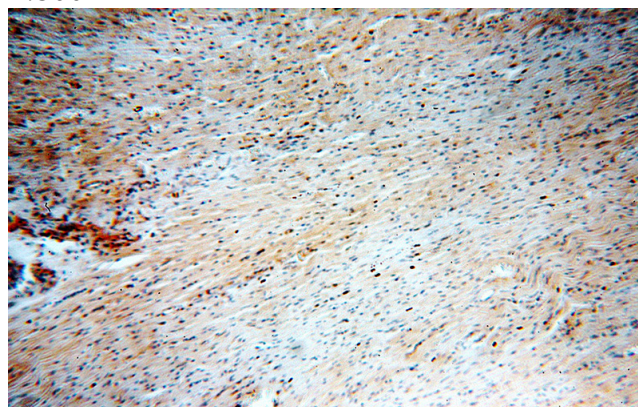
Rabbit IgG

## Applications

ELISA, WB, IHC, FC, IF

## Dilutions

Recommended Dilution:

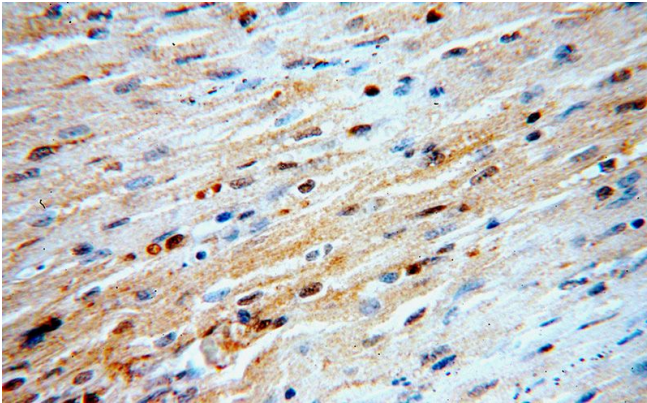


Immunohistochemical of paraffin-embedded human heart using Catalog No:112157(LATS2-Specific antibody) at dilution of 1:100 (under 10x lens)

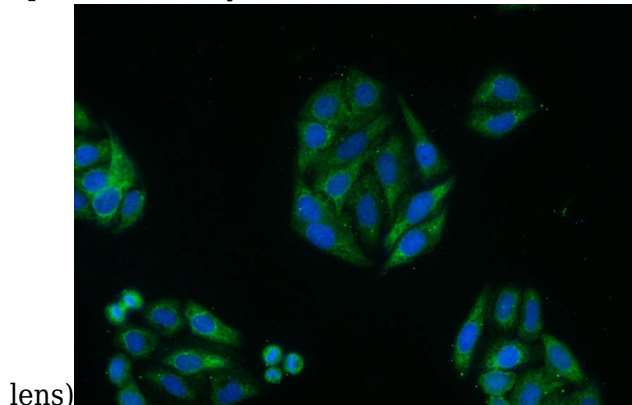
# LATS2-Specific antibody



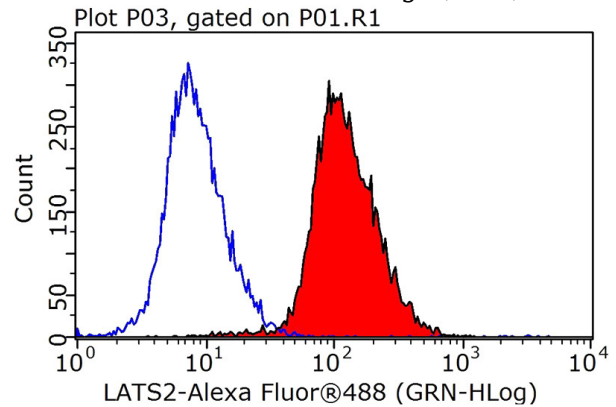
Catalog Number: 112157



Immunohistochemical of paraffin-embedded human heart using Catalog No:112157(LATS2-Specific antibody) at dilution of 1:100 (under 40x



Immunofluorescent analysis of HepG2 cells using Catalog No:112157(LATS2-Specific Antibody) at dilution of 1:50 and Alexa Fluor 488-conjugated AffiniPure Goat Anti-Rabbit IgG(H+L)



1X10<sup>6</sup> HeLa cells were stained with 0.2ug LATS2-Specific antibody (Catalog No:112157, red) and control antibody (blue). Fixed with 90% MeOH blocked with 3% BSA (30 min). Alexa Fluor 488-conjugated AffiniPure Goat Anti-Rabbit IgG(H+L) with dilution 1:1000.