

# Anti-CLPP Rabbit antibody



Catalog Number: 168857

## Product name

Rabbit IgG

Anti-CLPP Rabbit antibody

## Applications

## Specificity

WB, FC, IP

Human, Mouse, Rat

## Dilutions

## Antibody description

1:1000-1:5000

CLPP Rabbit monoclonal antibody

1:20

## Preparation

1:20

Antigen: A synthetic peptide of human CLPP

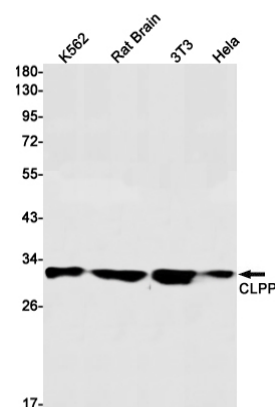
## Validations

## Formulation

Supplied in 50nM Tris-Glycine(pH 7.4), 0.15M NaCl, 40%Glycerol, 0.01% sodium azide and 0.05% BSA.

## Storage

Store at 4°C short term. Aliquot and store at -20°C long term. Avoid freeze / thaw cycle.



## Clonality

Monoclonal

Western blot detection of CLPP in K562,Rat Brain,3T3,Hela cell lysates using CLPP Rabbit mAb(1:1000 diluted).Predicted band size:30kDa.Observed band size:30kDa.

## Ig Type