

Anti-KLK6/Kallikrein 6/Neurosin antibody



Catalog Number: 104857

Product name

Anti-KLK6/Kallikrein 6/Neurosin antibody

Specificity

Mouse KLK6 / Kallikrein 6 / Neurosin

Antibody description

Rabbit polyclonal to KLK6/Kallikrein 6/Neurosin

Preparation

Produced in rabbits immunized with purified, recombinant Mouse KLK6 / Kallikrein 6 / Neurosin (NP_035307.2; Met 8-Leu 253). KLK6 / Kallikrein 6 / Neurosin specific IgG was purified by Mouse KLK6 / Kallikrein 6 / Neurosin affinity chromatography.

Formulation

0.2 µm filtered solution in PBS with 5% trehalose

Storage

This antibody can be stored at 2°C-8°C for one month without detectable loss of activity. Antibody products are stable for twelve months from date of receipt when stored at -20°C to -80°C.

Preservative-Free.

Sodium azide is recommended to avoid contamination (final concentration 0.05%-0.1%). It is toxic to cells and should be disposed of properly. Avoid repeated freeze-thaw cycles.

Clonality

Polyclonal

Ig Type

Rabbit IgG

Applications

ELISA, WB

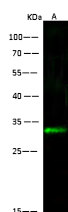
Dilutions

WB: 10-20 µg/ml

ELISA: 0.1-0.2 µg/mL

This antibody can be used at 0.1-0.2 µg/mL with the appropriate secondary reagents to detect Mouse KLK6 / Kallikrein 6 / Neurosin. The detection limit for Mouse KLK6 / Kallikrein 6 / Neurosin is < 0.039 ng/well.

Validations



Items	Lanes
Sample	A Mouse liver tissue lysate
Sample Volume (µg/lane)	30
Gel	13% SDS-PAGE reducing gel
Recommended Concentration	10-20 µg/ml
Secondary Antibody	Dylight 800 labeled Antibody To Rabbit IgG (H+L), at 1:5000 dilution. Developed using Odyssey imaging system.
Explanation	Predicted band size : 27 kDa Observed band size : 32 kDa

KLK6 / Kallikrein 6 / Neurosin Antibody, Rabbit PAb, Antigen Affinity Purified, Western blot