

Integrin alpha-1 antibody



Catalog Number: 111857

Product name

Integrin alpha-1 antibody

Specificity

Human; other species not tested.

Antibody description

Integrin alpha-1 Rabbit Polyclonal antibody.
Positive IHC detected in human tonsillitis tissue.
Positive FC detected in HeLa cells. Positive WB detected in HepG2 cells, SMMC-7721 cells.
Observed molecular weight by Western-blot: 180 kDa

Preparation

This antibody was obtained by immunization of Integrin alpha-1 recombinant protein (Accession Number: NM_181501). Purification method: Antigen Affinity purified.

Formulation

PBS with 0.02% sodium azide and 50% glycerol pH 7.3.

Storage

Store at -20°C. DO NOT ALIQUOT

Clonality

Polyclonal

Ig Type

Rabbit IgG

Applications

ELISA, WB, IHC, FC

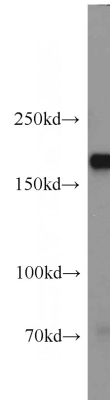
Dilutions

Recommended Dilution:

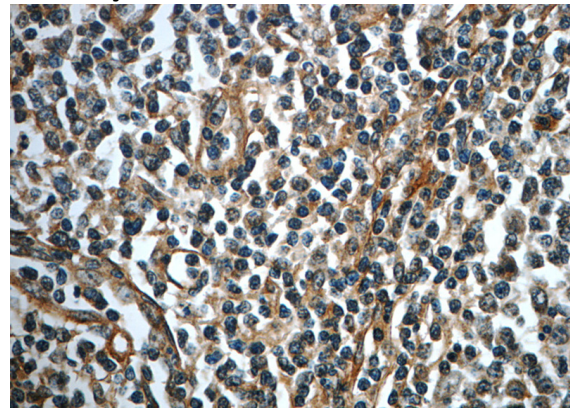
WB: 1:500-1:5000

IHC: 1:20-1:200

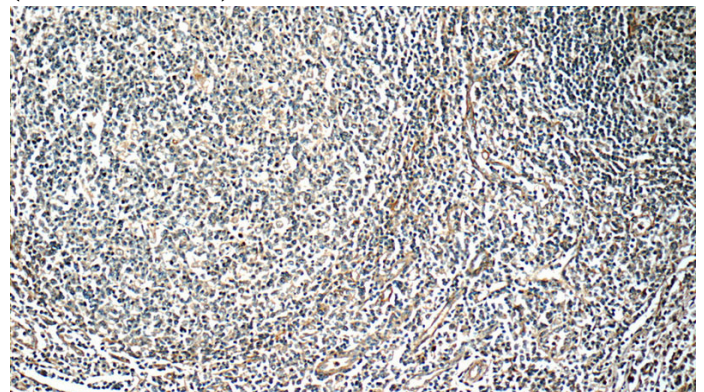
Validations



HepG2 cells were subjected to SDS PAGE followed by western blot with Catalog No:111857(ITGA1 antibody) at dilution of 1:1000



Immunohistochemistry of paraffin-embedded human tonsillitis slide using Catalog No:111857(ITGA1 Antibody) at dilution of 1:50 (under 40x lens)



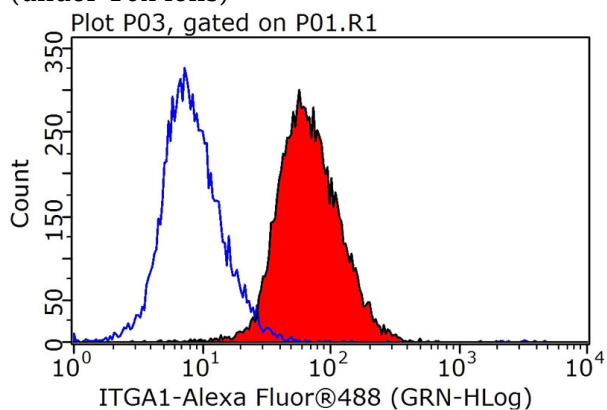
Immunohistochemistry of paraffin-embedded human tonsillitis slide using Catalog No:111857(ITGA1 Antibody) at dilution of 1:50

Integrin alpha-1 antibody



Catalog Number: 111857

(under 10x lens)



1X10⁶ HeLa cells were stained with 0.2ug Integrin alpha-1 antibody (Catalog No:111857, red) and control antibody (blue). Fixed with 90% MeOH blocked with 3% BSA (30 min). Alexa Fluor 488-conjugated AffiniPure Goat Anti-Rabbit IgG(H+L) with dilution 1:1000.