

gamma catenin antibody



Catalog Number: 110857

Product name

gamma catenin antibody

Specificity

Human, Mouse, Rat; other species not tested.

Antibody description

gamma catenin Rabbit Polyclonal antibody. Positive IHC detected in human pancreas cancer tissue, human breast cancer tissue, human colon cancer tissue, human skin tissue. Positive WB detected in mouse heart tissue, A431 cells, HeLa cells, human heart tissue. Observed molecular weight by Western-blot: 82 kDa

Preparation

This antibody was obtained by immunization of gamma catenin recombinant protein (Accession Number: NM_021991). Purification method: Antigen affinity purified.

Formulation

PBS with 0.1% sodium azide and 50% glycerol pH 7.3.

Storage

Store at -20°C. DO NOT ALIQUOT

Clonality

Polyclonal

Ig Type

Rabbit IgG

Applications

ELISA, IHC, WB

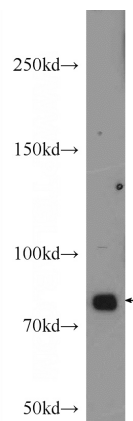
Dilutions

Recommended Dilution:

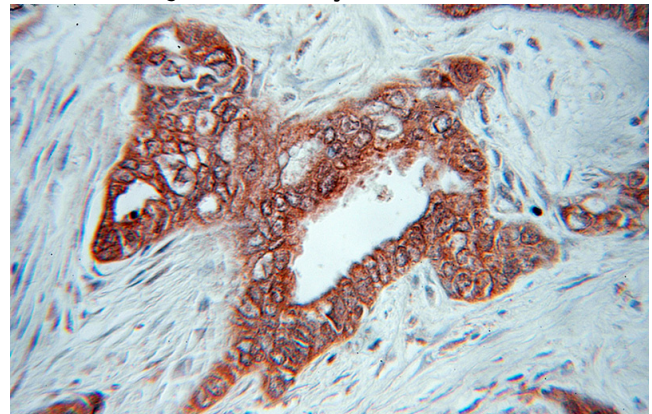
WB: 1:500-1:5000

IHC: 1:20-1:200

Validations



mouse heart tissue were subjected to SDS PAGE followed by western blot with Catalog No:110857(JUP Antibody) at dilution of 1:1000



Immunohistochemical of paraffin-embedded human pancreas cancer using Catalog No:110857(JUP antibody) at dilution of 1:50 (under 10x lens)