

TXNL6 antibody

Catalog Number: 116457

Product name

TXNL6 antibody

IP: 1:200-1:2000

IHC: 1:20-1:200

Specificity

Human, Mouse; other species not tested.

Antibody description

TXNL6 Rabbit Polyclonal antibody. Positive IP detected in mouse brain tissue. Positive WB detected in mouse brain tissue, HeLa cells. Positive IHC detected in human breast cancer tissue. Observed molecular weight by Western-blot: 26-28kd

Preparation

This antibody was obtained by immunization of TXNL6 recombinant protein (Accession Number: NM_138454). Purification method: Antigen affinity purified.

Formulation

PBS with 0.1% sodium azide and 50% glycerol pH 7.3.

Storage

Store at -20°C. DO NOT ALIQUOT

Clonality

Polyclonal

Ig Type

Rabbit IgG

Applications

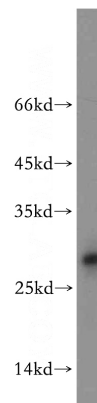
ELISA, WB, IHC, IP

Dilutions

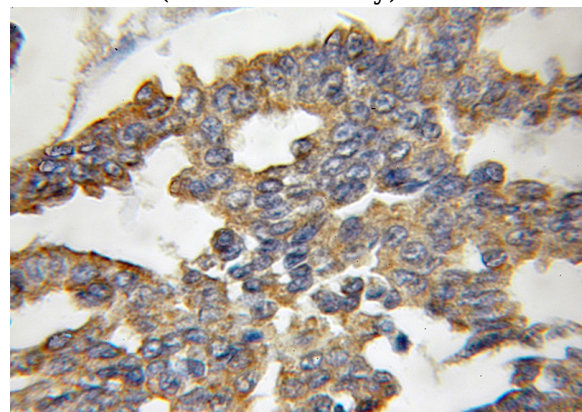
Recommended Dilution:

WB: 1:500-1:5000

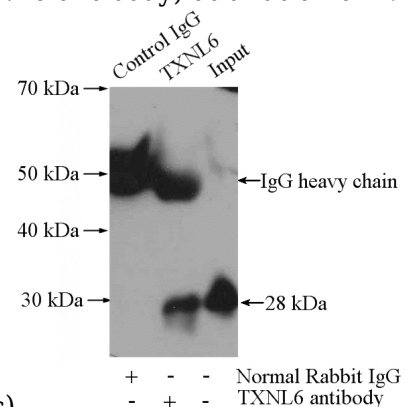
Validations



mouse brain tissue were subjected to SDS PAGE followed by western blot with Catalog No:116457(TXNL6 antibody) at dilution of 1:800



Immunohistochemical of paraffin-embedded human breast cancer using Catalog No:116457(TXNL6 antibody) at dilution of 1:100



(under 10x lens)

IP Result of anti-TXNL6 (IP:Catalog No:116457,

TXNL6 antibody



Catalog Number: 116457

4ug; Detection:Catalog No:116457 1:500) with mouse brain tissue lysate 4000ug.