

# CXCR5 Polyclonal Antibody



Catalog Number: 164457

## Product name

CXCR5 Polyclonal Antibody

## Specificity

Human

## Antibody description

Polyclonal antibody to CXCR5

## Preparation

Antigen: A synthetic peptide corresponding to a sequence within amino acids 300 to the C-terminus of human CXCR5 (NP\_001707.1).

## Formulation

PBS with 0.02% sodium azide, 50% glycerol, pH7.3.

## Storage

Store at -20°C. Avoid freeze / thaw cycles.

## Clonality

Polyclonal

## Ig Type

Rabbit IgG

## Applications

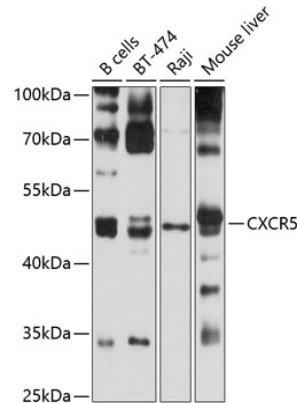
WB, IF

## Dilutions

WB 1:500 - 1:2000

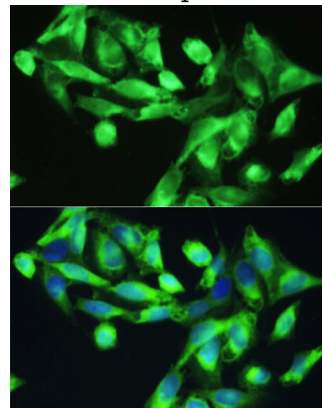
IF 1:50 - 1:200

## Validations



Western blot - CXCR5 Polyclonal Antibody

Western blot analysis of extracts of various cell lines, using CXCR5 antibody at 1:1000 dilution. Secondary antibody: HRP Goat Anti-Rabbit IgG (H+L) at 1:10000 dilution. Lysates/proteins: 25ug per lane. Blocking buffer: 3% nonfat dry milk in TBST. Detection: ECL Basic Kit. Exposure time: 10s.



Immunofluorescence - CXCR5 Polyclonal Antibody

Immunofluorescence analysis of U2OS cells using CXCR5 antibody at dilution of 1:100. Blue: DAPI for nuclear staining.