

Anti-METTL1 antibody



Catalog Number: 103457

Product name

Anti-METTL1 antibody

Immunogen

[Human METTL1 \(His Tag\) recombinant protein](#)

Specificity

Human METTL1

Antibody description

Rabbit polyclonal to METTL1

Preparation

Produced in rabbits immunized with purified, recombinant Human METTL1 (rh METTL1; NP_005362.3; Asp 32-Gln 265). METTL1 specific IgG was purified by Human METTL1 affinity chromatography.

Formulation

0.2 µm filtered solution in PBS with 5% trehalose

Storage

This antibody can be stored at 2°C-8°C for one month without detectable loss of activity. Antibody products are stable for twelve months from date of receipt when stored at -20°C to -80°C.

Preservative-Free.

Sodium azide is recommended to avoid contamination (final concentration 0.05%-0.1%). It is toxic to cells and should be disposed of properly. Avoid repeated freeze-thaw cycles.

Clonality

Polyclonal

Ig Type

Rabbit IgG

Applications

ELISA, WB, IHC-P, IP

Dilutions

WB: 10-20 µg/mL

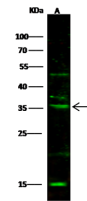
ELISA: 0.1-0.2 µg/mL

This antibody can be used at 0.1-0.2 µg/mL with the appropriate secondary reagents to detect Human METTL1. The detection limit for Human METTL1 is approximately 0.00245 ng/well.

IHC-P: 0.1-2 µg/mL

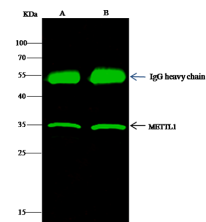
IP: 1-4 µg/mg of lysate

Validations



Lanes	A
Sample (whole cell lysate)	Jurkat
Sample Volume (µg/lane)	30
Gel	13% SDS-PAGE reducing gel
Recommended Concentration	10-20 µg/ml
Secondary Antibody	Dylight 800-labeled Antibody to Rabbit IgG (H+L), at 1:5000 dilution.
Explanation	Developed using Odyssey imaging system. Predicted band size : 31 kDa Observed band size : 35 kDa Additional bands at : 50 kDa, 37 kDa and 15 kDa (We are unsure as to the identity of these extra bands.)

METTL1 Antibody, Rabbit PAb, Antigen Affinity



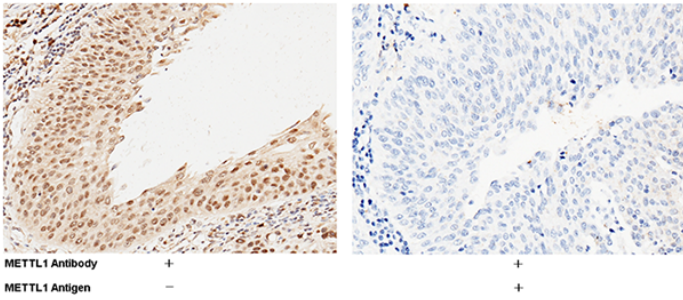
Lanes	A	B
Sample (whole cell lysate)	HeLa	293T
Sample quantity	0.5 mg	
IP antibody quantity	2 µg	
Protein G agarose	15 µl of 50% Protein G Agarose	
Gel	13% SDS-PAGE reducing gel	
Primary antibody	METTL1 antibody at 10 µg/ml	
Secondary antibody	Dylight 800-labeled antibody to rabbit IgG (H+L), at 1:5000 dilution.	

Purified, Western blot

METTL1 Antibody, Rabbit PAb, Antigen Affinity
Purified, Immunoprecipitation

Anti-METTL1 antibody

Catalog Number: 103457



Purified, Immunohistochemistry

Immunochemical staining of human METTL1 in human bladder carcinoma with rabbit polyclonal antibody (1 $\mu\text{g}/\text{mL}$, formalin-fixed paraffin embedded sections). The left panel: tissue incubated with primary antibody; The right panel: tissue incubated with the mixture of primary antibody and antigen (recombinant protein).

METTL1 Antibody, Rabbit PAb, Antigen Affinity