

# SAMM50 antibody



Catalog Number: 115057

## Product name

SAMM50 antibody

## Specificity

Human, Mouse, Rat; other species not tested.

## Antibody description

SAMM50 Rabbit Polyclonal antibody. Positive IHC detected in human hepatocirrhosis tissue, human skin tissue. Positive WB detected in mouse ovary tissue, A375 cells, A431 cells, HEK-293 cells, HeLa cells. Observed molecular weight by Western-blot: 52 kDa

## Preparation

This antibody was obtained by immunization of SAMM50 recombinant protein (Accession Number: NM\_015380). Purification method: Antigen affinity purified.

## Formulation

PBS with 0.02% sodium azide and 50% glycerol pH 7.3.

## Storage

Store at -20°C. DO NOT ALIQUOT

## Clonality

Polyclonal

## Ig Type

Rabbit IgG

## Applications

ELISA, WB, IHC

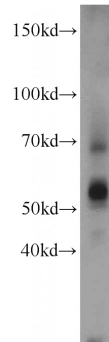
## Dilutions

Recommended Dilution:

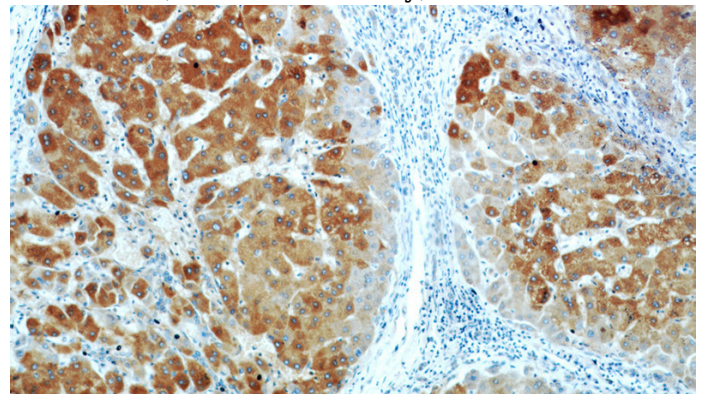
WB: 1:500-1:5000

IHC: 1:20-1:200

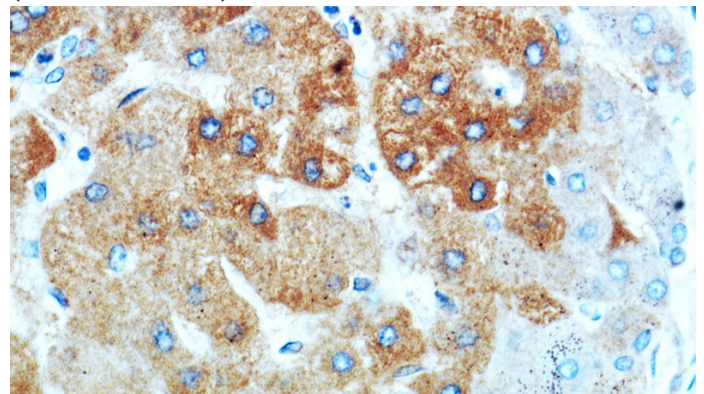
## Validations



mouse ovary tissue were subjected to SDS PAGE followed by western blot with Catalog No:115057(SAMM50 antibody) at dilution of 1:400



Immunohistochemical of paraffin-embedded human hepatocirrhosis using Catalog No:115057(SAMM50 antibody) at dilution of 1:100 (under 10x lens)



Immunohistochemical of paraffin-embedded human hepatocirrhosis using Catalog No:115057(SAMM50 antibody) at dilution of 1:100

# SAMM50 antibody



Catalog Number: 115057

---

(under 40x lens)